

**TOURIST ACCOMMODATION, SOUTH AUSTRALIA,
JUNE QUARTER 1994**

MAIN FEATURES

JUNE QUARTER 1994
COMPARED WITH
JUNE QUARTER 1993

HOTELS, MOTELS AND GUEST HOUSES

- Rooms available decreased by 0.3 per cent from 10,632 to 10,597 and bed spaces increased by 0.9 per cent from 29,633 to 29,898.
- Room nights occupied increased by 2.3 per cent from 446,640 to 456,889 overall with four star rated establishments and five star rated establishments recording increases of 16.0 per cent and 12.5 per cent respectively.
- The room occupancy rate overall rose from 46.2 per cent to 47.4 per cent, ranging from 61.8 per cent for four star rated establishments and 60.4 per cent for five star rated establishments to 25.7 per cent for one star establishments. By region, the room occupancy rate ranged from 53.1 per cent for Adelaide Statistical Division to 33.2 per cent for Eyre Statistical Division.
- Guest nights increased by 0.4 per cent from 743,087 to 745,906 but the bed occupancy rate decreased from 27.6 per cent to 27.4 per cent.
- Guest arrivals rose by 2.0 per cent from 395,314 to 403,172 while the average length of stay was constant at 1.9 days overall.
- Takings from accommodation increased by 4.4 per cent from \$31.2m to \$32.5m with average takings per room night occupied rising from \$70 to \$71.

HOLIDAY FLATS, UNITS AND HOUSES

- The number of units, etc. available for short-term letting remained at 1,338 while unit nights occupied decreased by 2.2 per cent from 44,833 to 43,848.
- The unit occupancy rate fell from 36.8 per cent to 36.1 per cent.
- Unit lettings decreased by 0.9 per cent from 9,061 to 8,976 with the average length of stay steady at 4.9 days.
- Accommodation takings fell by 1.9 per cent from \$2.4m to \$2.3m while the average takings per unit night occupied stayed at \$53.

CARAVAN PARKS

- Caravan park capacity available decreased by 1.2 per cent from 24,434 to 24,136 powered and unpowered sites and cabins, etc. of which 1,984 sites, etc. (8.2 per cent) were occupied by long-term residents, 1,538 sites (6.4 per cent) were permanently reserved but only casually occupied by their tenants and an average of 2,937 sites (12.2 per cent) were occupied by other short-term guests.
- Site nights occupied increased by 1.9 per cent from 577,057 to 587,769 and the site occupancy rate rose from 26.0 per cent to 26.9 per cent.
- Accommodation takings fell from \$6.5m to \$6.4m with the average takings per site night occupied remaining at \$11.

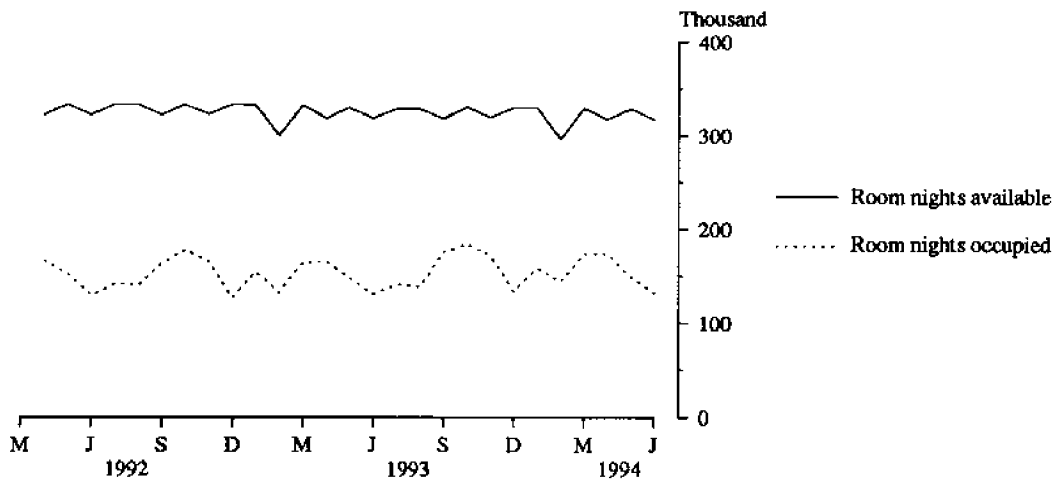
VISITOR HOSTELS

- Bed spaces available increased by 8.3 per cent from 1,955 to 2,118.
- Guest nights occupied rose from 44,937 to 51,710 and the bed occupancy rate increased from 25.3 per cent to 27.1 per cent.
- Guest arrivals rose by 22.7 per cent from 22,577 to 27,713 and the average length of stay fell from 2.0 days to 1.9 days.
- Accommodation takings rose from \$0.47m to \$0.48m while average takings per guest night dropped from \$10 to \$9.

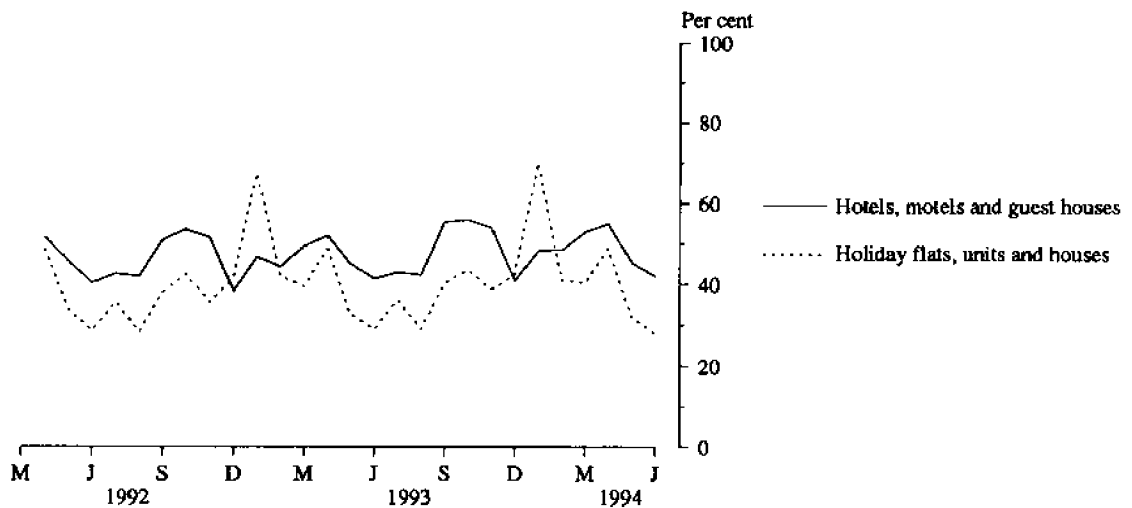
INQUIRIES

- *for further information about statistics in this publication and the availability of related unpublished statistics, contact Brian Hay on 008 077304 or any ABS office.*
 - *for information about other ABS statistics and services, refer to the back page of this publication.*
- *****

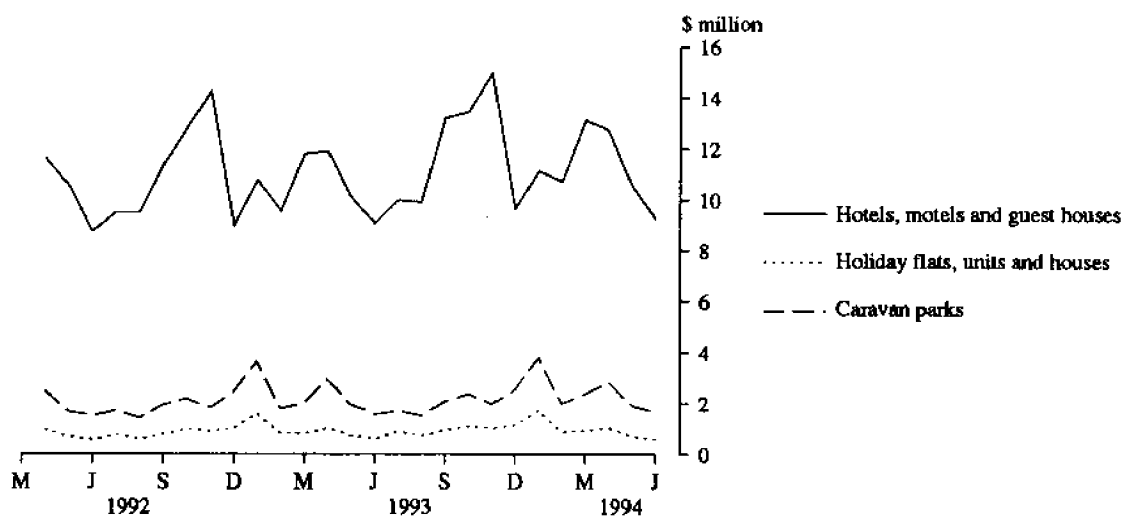
**MONTHLY ROOM NIGHTS AVAILABLE AND OCCUPIED:
HOTELS, MOTELS AND GUEST HOUSES,
SOUTH AUSTRALIA**



**MONTHLY OCCUPANCY RATES,
SOUTH AUSTRALIA**



**MONTHLY TAKINGS FROM ACCOMMODATION,
SOUTH AUSTRALIA**



CONTENTS

<i>Table</i>		<i>Page</i>
..	Main features	1
..	Diagrams	2
1	Summary of hotels, motels and guest houses with facilities, Adelaide Statistical Division and South Australia	4
2	Summary of caravan parks, Adelaide Statistical Division and South Australia	5
3	Summary of holiday flats, units and houses, South Australia	6
4	Summary of visitor hostels, South Australia	6
5	Hotels, motels and guest houses with facilities by star grading, South Australia	7
6	Hotels, motels and guest houses with facilities by statistical division, South Australia	8
7A	Licensed hotels and motels and guest houses with facilities: Statistical subdivisions and selected statistical local areas, South Australia	10
7B	Hotels, motels and guest houses with facilities: Statistical divisions and selected subdivisions and statistical local areas, South Australia	12
8	Holiday flats, units and houses: Statistical divisions and selected subdivisions, South Australia	14
9	Caravan parks by statistical division, South Australia	16
10	Caravan parks: Statistical divisions and selected subdivisions and statistical local areas, South Australia	18
11	Visitor hostels by statistical division, South Australia	20
..	Explanatory Notes	21
..	Appendix: Statistical divisions, subdivisions and statistical local areas, South Australia	24
..	Reference map – statistical divisions and subdivisions, South Australia	26

TABLE 1 — SUMMARY OF HOTELS, MOTELS AND GUEST HOUSES WITH FACILITIES, SOUTH AUSTRALIA (a)

Particulars	Unit	Quarter ended				Year ended			
		March 1993	June 1993	September 1993	December 1993	March 1994	June 1994	June 1993	June 1994
ADELAIDE STATISTICAL DIVISION — TOTAL HOTELS, MOTELS AND GUEST HOUSES WITH FACILITIES									
Establishments	No.	122	120	118	114	114	115
Guest rooms	No.	5,411	5,355	5,351	5,379	5,382	5,382
Bed spaces	No.	14,460	14,130	14,171	14,278	14,284	14,345
Employment (persons)	No.	4,625	4,470	4,661	4,575	4,383	4,371
Room nights occupied	No.	262,410	250,832	267,684	289,899	288,721	260,162	1,036,307	1,106,466
Room occupancy rate	per cent	53.9	51.5	54.4	58.6	59.7	53.1	52.6	56.5
Guest nights	No.	435,075	401,917	424,563	472,171	474,936	406,604	1,679,918	1,778,274
Bed occupancy rate	per cent	33.4	31.3	32.6	36.0	37.0	31.1	31.8	34.2
Guest arrivals	No.	190,646	183,207	192,246	214,341	225,382	185,159	743,581	817,128
Average length of stay	days	2.3	2.2	2.2	2.2	2.1	2.2	2.3	2.2
Takings from accommodation	\$'000	21,534	20,222	22,633	26,696	24,291	21,614	86,182	95,234
SOUTH AUSTRALIA — LICENSED HOTELS WITH FACILITIES									
Establishments	No.	121	121	121	114	113	116
Guest rooms	No.	4,538	4,535	4,520	4,479	4,453	4,420
Bed spaces	No.	11,038	11,024	11,044	10,929	10,913	10,935
Employment (persons)	No.	5,175	4,988	5,196	5,134	4,928	4,955
Room nights occupied	No.	184,219	183,166	199,691	209,975	201,071	193,539	757,210	804,276
Room occupancy rate	per cent	45.1	44.4	48.0	51.0	50.3	48.1	45.6	49.3
Guest nights	No.	286,908	279,838	303,453	322,018	309,616	289,058	1,160,817	1,224,145
Bed occupancy rate	per cent	28.9	27.9	29.9	32.0	31.6	29.0	28.5	30.6
Guest arrivals	No.	139,321	142,377	152,231	157,554	160,333	137,238	582,749	607,356
Average length of stay	days	2.1	2.0	2.0	2.0	1.9	2.1	2.0	2.0
Takings from accommodation	\$'000	15,237	14,594	16,861	19,385	17,328	16,068	62,609	69,643
SOUTH AUSTRALIA — MOTELS AND GUEST HOUSES WITH FACILITIES									
Establishments	No.	242	239	236	228	229	229
Guest rooms	No.	6,201	6,097	6,084	6,171	6,172	6,177
Bed spaces	No.	19,055	18,609	18,653	18,935	18,963	18,963
Employment (persons)	No.	2,419	2,319	2,428	2,490	2,400	2,360
Room nights occupied	No.	268,962	263,474	256,703	282,651	276,736	263,350	1,061,354	1,079,440
Room occupancy rate	per cent	48.3	47.5	45.9	49.8	49.8	46.9	47.2	48.1
Guest nights	No.	491,656	463,249	440,431	502,482	503,530	456,848	1,890,413	1,903,291
Bed occupancy rate	per cent	28.7	27.4	25.7	28.9	29.5	26.5	27.4	27.6
Guest arrivals	No.	259,719	252,937	253,797	284,527	277,115	265,934	1,027,941	1,081,373
Average length of stay	days	1.9	1.8	1.7	1.8	1.8	1.7	1.8	1.8
Takings from accommodation	\$'000	16,973	16,581	16,272	18,711	17,679	16,478	67,273	69,139
SOUTH AUSTRALIA — TOTAL HOTELS, MOTELS AND GUEST HOUSES WITH FACILITIES									
Establishments	No.	363	360	357	342	342	345
Guest rooms	No.	10,739	10,632	10,604	10,650	10,625	10,597
Bed spaces	No.	30,093	29,633	29,697	29,864	29,876	29,898
Employment (persons)	No.	7,594	7,307	7,624	7,624	7,328	7,315
Room nights occupied	No.	453,181	446,640	456,394	492,626	477,807	456,889	1,818,564	1,883,716
Room occupancy rate	per cent	47.0	46.2	46.8	50.3	50.0	47.4	46.5	48.6
Guest nights	No.	778,564	743,087	743,884	824,500	813,146	745,906	3,051,230	3,127,436
Bed occupancy rate	per cent	28.8	27.6	27.2	30.0	30.3	27.4	27.8	28.7
Guest arrivals	No.	399,040	395,314	406,028	442,081	437,448	403,172	1,610,690	1,688,729
Average length of stay	days	2.0	1.9	1.8	1.9	1.9	1.9	1.9	1.9
Takings from accommodation	\$'000	32,210	31,175	33,133	38,096	35,007	32,547	129,882	138,782

(a) From December quarter 1993, establishments with fewer than 5 rooms have been formally excluded from the scope of this collection. See Explanatory Note 2 (page 21).

TABLE 2 — SUMMARY OF CARAVAN PARKS, SOUTH AUSTRALIA

Particulars	Unit	Quarter ended				Year ended			
		March 1993	June 1993	September 1993	December 1993	March 1994	June 1994	June 1993	June 1994
ADELAIDE STATISTICAL DIVISION — TOTAL CARAVAN PARKS									
Establishments	No.	26	26	26	26	26	26
Capacity									
On-site vans	No.	276	260	259	261	261	245
Other powered sites	No.	2,615	2,634	2,646	2,646	2,650	2,541
Unpowered sites	No.	398	418	418	410	405	412
Cabins, etc.	No.	360	367	369	369	369	374
Total capacity	No.	3,649	3,679	3,692	3,686	3,685	3,572
Sites occupied by long-term guests	No.	1,109	1,102	1,109	1,063	1,085	1,063
Other sites permanently reserved	No.	21	34	30	31	32	34
Employment (persons)	No.	164	165	153	160	157	139
Site nights occupied	No.	185,434	155,086	150,227	166,949	188,646	151,655	664,126	657,477
Site occupancy rate	per cent	36.5	46.3	44.2	49.2	56.9	46.7	49.3	49.2
Takings from accommodation	\$'000	2,418	1,863	1,730	2,337	2,749	1,888	8,320	8,704
SOUTH AUSTRALIA — SHORT-TERM CARAVAN PARKS									
Establishments	No.	171	170	168	167	166	167
Capacity									
On-site vans	No.	954	935	934	939	934	902
Other powered sites	No.	12,093	12,089	12,021	11,994	11,908	11,873
Unpowered sites	No.	5,881	5,798	5,810	5,736	5,510	5,527
Cabins, etc.	No.	1,231	1,216	1,227	1,256	1,254	1,289
Total capacity	No.	20,159	20,038	19,992	19,925	19,606	19,591
Sites occupied by long-term guests	No.	643	632	605	585	604	616
Other sites permanently reserved	No.	1,330	1,359	1,437	1,467	1,505	1,502
Employment (persons)	No.	645	607	584	593	594	586
Site nights occupied	No.	483,249	415,132	352,153	427,273	500,304	429,313	1,651,613	1,709,043
Site occupancy rate	per cent	26.6	22.8	19.1	23.4	28.4	24.3	22.3	23.7
Takings from accommodation	\$'000	6,084	4,961	3,916	5,370	6,611	4,893	20,113	20,790
SOUTH AUSTRALIA — LONG-TERM CARAVAN PARKS									
Establishments	No.	40	41	43	44	44	44
Capacity									
On-site vans	No.	251	242	252	252	245	244
Other powered sites	No.	2,732	2,736	2,795	2,836	2,859	2,868
Unpowered sites	No.	985	1,031	1,071	1,046	1,042	1,042
Cabins, etc.	No.	339	387	390	389	390	391
Total capacity	No.	4,307	4,396	4,508	4,523	4,536	4,545
Sites occupied by long-term guests	No.	1,380	1,366	1,399	1,364	1,378	1,368
Other sites permanently reserved	No.	33	31	30	29	37	36
Employment (persons)	No.	148	155	145	156	155	147
Site nights occupied	No.	153,121	161,925	152,778	155,419	155,939	158,456	603,722	622,592
Site occupancy rate	per cent	39.5	40.5	36.8	37.3	38.2	38.3	40.3	37.7
Takings from accommodation	\$'000	1,430	1,564	1,415	1,549	1,580	1,521	5,570	6,065
SOUTH AUSTRALIA — TOTAL CARAVAN PARKS									
Establishments	No.	211	211	211	211	210	211
Capacity									
On-site vans	No.	1,205	1,177	1,186	1,191	1,179	1,146
Other powered sites	No.	14,825	14,825	14,816	14,830	14,767	14,741
Unpowered sites	No.	6,866	6,829	6,881	6,782	6,552	6,569
Cabins, etc.	No.	1,570	1,603	1,617	1,645	1,644	1,680
Total capacity	No.	24,466	24,434	24,500	24,448	24,142	24,136
Sites occupied by long-term guests	No.	2,023	1,998	2,004	1,949	1,982	1,984
Other sites permanently reserved	No.	1,363	1,390	1,467	1,496	1,542	1,538
Employment (persons)	No.	793	762	729	749	749	733
Site nights occupied	No.	636,370	577,057	504,931	582,692	656,243	587,769	2,255,335	2,331,635
Site occupancy rate	per cent	28.9	26.0	22.4	26.0	30.2	26.9	25.3	26.3
Takings from accommodation	\$'000	7,514	6,525	5,331	6,918	8,192	6,414	25,683	26,855

TABLE 3 — SUMMARY OF HOLIDAY FLATS, UNITS AND HOUSES, SOUTH AUSTRALIA

Particulars	Unit	Quarter ended				Year ended			
		March 1993	June 1993	September 1993	December 1993	March 1994	June 1994	June 1993	June 1994
Letting entities	No.	83	86	87	87	86	89
Flats, units and houses									
Single bedroom	No.	359	370	366	360	304	317
Multiple bedroom	No.	954	968	996	1,017	1,017	1,021
<i>Total flats, units and houses</i>	<i>No.</i>	<i>1,313</i>	<i>1,338</i>	<i>1,362</i>	<i>1,377</i>	<i>1,321</i>	<i>1,338</i>
Bed spaces	No.	6,491	6,621	6,747	6,865	6,719	6,757
Employment (persons) (a)	No.	248	270	260	266	275	266
Unit nights occupied	No.	58,970	44,833	43,696	52,563	60,475	43,848	192,517	200,582
Unit occupancy rate	per cent	49.9	36.8	35.2	41.6	50.9	36.1	40.2	40.9
Unit lettings	No.	10,097	9,061	9,493	10,375	10,258	8,976	38,200	39,102
Average length of stay	days	5.8	4.9	4.6	5.1	5.9	4.9	5.0	5.1
Takings from accommodation	\$'000	3,263	2,359	2,551	3,290	3,546	2,313	10,740	11,700

(a) Employment numbers exclude real estate agents and their employees.

TABLE 4 — SUMMARY OF VISITOR HOSTELS, SOUTH AUSTRALIA

Particulars	Unit	Quarter ended				Year ended			
		March 1993	June 1993	September 1993	December 1993	March 1994	June 1994	June 1993	June 1994
Establishments	No.	41	40	42	42	44	46
Bed spaces	No.	1,970	1,955	2,029	2,037	2,098	2,118
Employment (persons)	No.	127	125	121	123	144	136
Guest nights	No.	59,084	44,937	47,999	59,296	67,089	51,710	204,630	226,094
Bed occupancy rate	per cent	33.6	25.3	25.9	31.6	35.5	27.1	29.8	30.0
Guest arrivals	No.	32,142	22,577	28,272	27,628	31,479	27,713	111,045	115,092
Average length of stay	days	1.8	2.0	1.7	2.1	2.1	1.9	1.8	2.0
Takings from accommodation	\$'000	598	471	432	638	673	482	1,996	2,226

TABLE 5 — HOTELS, MOTELS AND GUEST HOUSES WITH FACILITIES BY STAR GRADING,
SOUTH AUSTRALIA (a)

Particulars	Star grading						Total
	1	2	3	4	5	Ungraded	
ESTABLISHMENTS, CAPACITY AND EMPLOYMENT							
<i>June quarter 1993—</i>							
Establishments	17	152	137	16	3	35	360
Guest rooms	222	3,194	4,731	1,070	1,083	332	10,632
Bed spaces	453	8,937	13,837	3,362	2,166	878	29,633
Employment (persons)	241	2,119	2,447	942	976	582	7,307
<i>June quarter 1994—</i>							
Establishments	11	146	142	18	3	25	345
Guest rooms	138	3,114	4,797	1,186	1,081	281	10,597
Bed spaces	295	8,838	14,164	3,676	2,182	743	29,898
Employment (persons)	193	1,994	2,555	1,031	997	545	7,315
ROOM NIGHTS OCCUPIED							
<i>June quarter 1993</i>	3,798	107,416	215,357	57,461	52,804	9,804	446,640
<i>1994—</i>							
April	1,274	40,215	83,969	23,810	22,200	3,296	174,764
May	1,121	34,536	68,141	21,390	20,391	3,101	148,680
June	833	30,863	60,757	21,477	16,792	2,723	133,445
<i>June quarter 1994</i>	3,228	105,614	212,867	66,677	59,383	9,120	456,889
ROOM OCCUPANCY RATES (per cent)							
<i>June quarter 1993</i>	18.8	37.0	50.0	59.0	53.6	32.5	46.2
<i>1994—</i>							
April	30.8	43.0	58.3	66.9	68.5	39.1	55.0
May	26.2	35.8	45.8	58.2	60.8	35.6	45.3
June	20.1	33.0	42.2	60.4	51.8	32.3	42.0
<i>June quarter 1994</i>	25.7	37.3	48.8	61.8	60.4	35.7	47.4
GUEST NIGHTS							
<i>June quarter 1993</i>	5,574	187,149	368,247	93,138	73,857	15,122	743,087
<i>1994—</i>							
April	1,964	75,681	153,066	39,533	32,333	5,111	307,688
May	1,642	56,305	108,774	30,573	27,620	4,405	229,319
June	1,182	50,294	99,172	31,506	22,650	4,095	208,899
<i>June quarter 1994</i>	4,788	182,280	361,012	101,612	82,603	13,611	745,906
BED OCCUPANCY RATES (per cent)							
<i>June quarter 1993</i>	13.5	23.0	29.2	30.4	37.5	18.9	27.6
<i>1994—</i>							
April	22.2	28.5	36.0	35.8	49.4	22.9	34.3
May	18.0	20.6	24.8	26.8	40.8	19.1	24.7
June	13.4	19.0	23.3	28.6	34.6	18.4	23.3
<i>June quarter 1994</i>	17.8	22.7	28.0	30.4	41.6	20.1	27.4
GUEST ARRIVALS							
<i>June quarter 1993</i>	3,031	106,456	200,683	41,991	36,138	7,015	395,314
<i>1994—</i>							
April	946	42,738	83,450	15,316	13,556	2,581	158,587
May	634	33,237	64,584	12,885	12,447	2,328	126,115
June	592	30,401	60,025	13,969	11,352	2,131	118,470
<i>June quarter 1994</i>	2,172	106,376	208,059	42,170	37,355	7,040	403,172
AVERAGE LENGTH OF STAY (days)							
<i>June quarter 1993</i>	1.8	1.8	1.8	2.2	2.0	2.2	1.9
<i>June quarter 1994</i>	2.2	1.7	1.7	2.4	2.2	1.9	1.9
TAKINGS FROM ACCOMMODATION (\$'000)							
<i>June quarter 1993</i>	112	4,773	14,244	5,475	6,050	521	31,175
<i>1994—</i>							
April	35	1,887	5,566	2,409	2,693	117	12,708
May	39	1,486	4,371	2,065	2,477	108	10,547
June	22	1,300	3,911	2,013	1,952	95	9,292
<i>June quarter 1994</i>	95	4,673	13,847	6,488	7,122	321	32,547

(a) From December quarter 1993, establishments with fewer than 5 rooms have been formally excluded from the scope of this collection. See Explanatory Note 2 (page 21).

TABLE 6 — HOTELS, MOTELS AND GUEST HOUSES WITH FACILITIES BY STATISTICAL DIVISION,
SOUTH AUSTRALIA (a)

Particulars	Adelaide (SD)			Outer Adelaide (SD)			Yorke and Lower North (SD)			Murray Lands (SD)		
	Licensed hotels	Motels, etc.	Total	Licensed hotels	Motels, etc.	Total	Licensed hotels	Motels, etc.	Total	Licensed hotels	Motels, etc.	Total
ESTABLISHMENTS, CAPACITY AND EMPLOYMENT												
<i>June quarter 1993—</i>												
Establishments	57	63	120	7	45	52	8	18	26	11	23	34
Guest rooms	2,767	2,588	5,355	239	755	994	114	267	381	439	411	850
Bed spaces	6,297	7,833	14,130	769	2,382	3,151	311	827	1,138	1,082	1,294	2,376
Employment (persons)	3,496	974	4,470	283	324	607	70	118	188	354	134	488
<i>June quarter 1994—</i>												
Establishments	51	64	115	8	35	43	10	17	27	9	23	32
Guest rooms	2,737	2,645	5,382	245	734	979	128	268	396	358	409	767
Bed spaces	6,309	8,036	14,345	778	2,344	3,122	355	859	1,214	955	1,300	2,255
Employment (persons)	3,375	996	4,371	302	302	604	92	115	207	401	137	538
ROOM NIGHTS OCCUPIED												
<i>June quarter 1993</i>	126,844	123,988	250,832	9,049	25,568	34,617	2,168	12,140	14,308	14,152	15,730	29,882
<i>1994—</i>												
April	51,068	48,831	99,899	4,336	11,388	15,724	1,212	4,651	5,863	4,904	6,348	11,252
May	44,546	39,578	84,124	3,141	8,182	11,323	997	3,592	4,589	4,602	5,488	10,090
June	39,652	36,487	76,139	2,734	5,487	8,221	1,061	2,938	3,999	4,566	5,075	9,641
<i>June quarter 1994</i>	135,266	124,896	260,162	10,211	25,057	35,268	3,270	11,181	14,451	14,072	16,911	30,983
ROOM OCCUPANCY RATES (per cent)												
<i>June quarter 1993</i>	50.4	52.6	51.5	41.6	37.2	38.3	20.9	50.0	41.3	35.4	42.1	38.6
<i>1994—</i>												
April	62.2	61.5	61.9	59.0	51.7	53.5	31.6	57.8	49.4	45.7	51.7	48.9
May	52.5	48.3	50.4	41.4	36.0	37.3	25.1	43.2	37.4	41.5	43.3	42.4
June	48.3	46.0	47.2	37.2	24.9	28.0	27.6	36.5	33.7	42.5	41.4	41.9
<i>June quarter 1994</i>	54.3	51.9	53.1	45.8	37.5	39.6	28.1	45.8	40.1	43.2	45.4	44.4
GUEST NIGHTS												
<i>June quarter 1993</i>	186,573	215,344	401,917	18,214	52,228	70,442	3,198	21,933	25,131	22,876	29,151	52,027
<i>1994—</i>												
April	77,242	89,299	166,541	9,012	24,625	33,637	1,965	9,629	11,594	8,125	12,395	20,520
May	61,668	62,947	124,615	5,795	14,661	20,456	1,476	6,226	7,702	6,959	9,211	16,170
June	55,859	59,589	115,448	4,920	10,648	15,568	1,397	5,079	6,476	6,336	8,470	14,806
<i>June quarter 1994</i>	194,769	211,835	406,604	19,727	49,934	69,661	4,838	20,934	25,772	21,420	30,076	51,496
BED OCCUPANCY RATES (per cent)												
<i>June quarter 1993</i>	32.6	30.2	31.3	26.0	24.1	24.6	11.3	29.1	24.3	23.2	24.8	24.1
<i>1994—</i>												
April	40.8	37.0	38.7	38.6	35.0	35.9	18.5	37.4	31.8	28.4	31.8	30.3
May	31.5	25.3	28.0	24.0	20.2	21.1	13.4	23.4	20.5	23.5	22.9	23.1
June	29.5	24.7	26.8	21.1	15.1	16.6	13.1	19.7	17.8	22.1	21.7	21.9
<i>June quarter 1994</i>	33.9	29.0	31.1	27.9	23.4	24.5	15.0	26.8	23.3	24.6	25.4	25.1
GUEST ARRIVALS												
<i>June quarter 1993</i>	82,738	100,469	183,207	10,607	28,210	38,817	1,947	13,293	15,240	16,135	18,744	34,879
<i>1994—</i>												
April	28,146	42,846	70,992	5,291	12,101	17,392	1,120	6,262	7,382	5,170	8,276	13,446
May	24,581	33,216	57,797	3,469	7,781	11,250	846	4,199	5,045	4,883	6,182	11,065
June	23,587	32,783	56,370	3,186	6,150	9,336	802	3,607	4,409	4,335	5,657	9,992
<i>June quarter 1994</i>	76,314	108,845	185,159	11,946	26,032	37,978	2,768	14,068	16,836	14,388	20,115	34,503
AVERAGE LENGTH OF STAY (days)												
<i>June quarter 1993</i>	2.3	2.1	2.2	1.7	1.9	1.8	1.6	1.6	1.6	1.4	1.6	1.5
<i>June quarter 1994</i>	2.6	1.9	2.2	1.7	1.9	1.8	1.7	1.5	1.5	1.5	1.5	1.5
TAKINGS FROM ACCOMMODATION (\$'000)												
<i>June quarter 1993</i>	11,724	8,498	20,222	639	1,778	2,417	78	699	777	633	847	1,480
<i>1994—</i>												
April	5,063	3,385	8,448	285	781	1,067	44	263	307	229	343	571
May	4,404	2,600	7,003	195	533	729	33	196	229	205	291	496
June	3,736	2,427	6,163	176	387	563	34	159	193	191	271	462
<i>June quarter 1994</i>	13,202	8,411	21,614	657	1,701	2,358	111	618	729	625	904	1,529

TABLE 6 — HOTELS, MOTELS AND GUEST HOUSES WITH FACILITIES BY STATISTICAL DIVISION,
SOUTH AUSTRALIA (a)—continued

Particulars	South East (SD)			Eyre (SD)			Northern (SD)			South Australia		
	Licensed hotels	Motels, etc.	Total	Licensed hotels	Motels, etc.	Total	Licensed hotels	Motels, etc.	Total	Licensed hotels	Motels, etc.	Total
ESTABLISHMENTS, CAPACITY AND EMPLOYMENT												
<i>June quarter 1993—</i>												
Establishments	9	43	52	12	18	30	17	29	46	121	239	360
Guest rooms	164	964	1,128	264	366	630	548	746	1,294	4,535	6,097	10,632
Bed spaces	407	2,981	3,388	674	1,056	1,730	1,484	2,236	3,720	11,024	18,609	29,633
Employment (persons)	194	320	514	233	135	368	358	314	672	4,988	2,319	7,307
<i>June quarter 1994—</i>												
Establishments	9	43	52	13	18	31	16	29	45	116	229	345
Guest rooms	166	1,001	1,167	263	365	628	523	755	1,278	4,420	6,177	10,597
Bed spaces	405	3,084	3,489	696	1,086	1,782	1,437	2,254	3,691	10,935	18,963	29,898
Employment (persons)	186	343	529	241	128	369	358	339	697	4,955	2,360	7,315
ROOM NIGHTS OCCUPIED												
<i>June quarter 1993</i>	6,869	40,787	47,656	7,378	10,930	18,308	16,706	34,331	51,037	183,166	263,474	446,640
<i>1994—</i>												
April	2,248	16,050	18,298	2,646	4,397	7,043	5,376	11,309	16,685	71,790	102,974	174,764
May	2,233	12,395	14,628	2,541	3,926	6,467	5,530	11,929	17,459	63,590	85,090	148,680
June	1,660	10,671	12,331	2,253	3,201	5,454	6,233	11,427	17,660	58,159	75,286	133,445
<i>June quarter 1994</i>	6,141	39,116	45,257	7,440	11,524	18,964	17,139	34,665	51,804	193,539	263,350	456,889
ROOM OCCUPANCY RATES (per cent)												
<i>June quarter 1993</i>	46.0	46.5	46.4	30.7	32.8	31.9	33.5	50.6	43.3	44.4	47.5	46.2
<i>1994—</i>												
April	45.1	53.4	52.3	33.5	40.2	37.4	34.3	49.9	43.5	54.1	55.6	55.0
May	43.4	39.9	40.4	31.2	34.7	33.2	34.1	51.0	44.1	46.4	44.4	45.3
June	33.3	35.5	35.2	28.6	29.2	28.9	39.7	50.5	46.1	43.9	40.6	42.0
<i>June quarter 1994</i>	40.7	42.9	42.6	31.1	34.7	33.2	36.0	50.5	44.5	48.1	46.9	47.4
GUEST NIGHTS												
<i>June quarter 1993</i>	10,426	70,168	80,594	10,795	17,740	28,535	27,756	56,685	84,441	279,838	463,249	743,087
<i>1994—</i>												
April	3,495	30,314	33,809	4,040	7,791	11,831	9,593	20,163	29,756	113,472	194,216	307,688
May	3,254	19,243	22,497	3,643	6,211	9,854	8,706	19,319	28,025	91,501	137,818	229,319
June	2,414	16,850	19,264	3,146	4,916	8,062	10,013	19,262	29,275	84,085	124,814	208,899
<i>June quarter 1994</i>	9,163	66,407	75,570	10,829	18,918	29,747	28,312	58,744	87,056	289,058	456,848	745,906
BED OCCUPANCY RATES (per cent)												
<i>June quarter 1993</i>	28.2	25.9	26.1	17.6	18.5	18.1	20.6	27.9	24.9	27.9	27.4	27.6
<i>1994—</i>												
April	28.8	32.8	32.3	19.3	23.9	22.1	22.3	29.8	26.9	34.6	34.1	34.3
May	25.9	20.1	20.8	16.9	18.4	17.8	19.5	27.6	24.5	27.0	23.4	24.7
June	19.9	18.2	18.4	15.1	15.1	15.1	23.2	28.5	26.4	25.6	21.9	23.3
<i>June quarter 1994</i>	24.9	23.7	23.8	17.1	19.1	18.3	21.7	28.6	25.9	29.0	26.5	27.4
GUEST ARRIVALS												
<i>June quarter 1993</i>	4,856	40,106	44,962	6,735	12,085	18,820	19,359	40,030	59,389	142,377	252,937	395,314
<i>1994—</i>												
April	2,020	18,692	20,712	2,430	5,229	7,659	6,615	14,389	21,004	50,792	107,795	158,587
May	1,527	12,261	13,788	2,396	4,228	6,624	6,101	14,445	20,546	43,803	82,312	126,115
June	1,461	10,206	11,667	2,013	3,269	5,282	7,259	14,155	21,414	42,643	75,827	118,470
<i>June quarter 1994</i>	5,008	41,159	46,167	6,839	12,726	19,565	19,975	42,989	62,964	137,238	265,934	403,172
AVERAGE LENGTH OF STAY (days)												
<i>June quarter 1993</i>	2.1	1.7	1.8	1.6	1.5	1.5	1.4	1.4	1.4	2.0	1.8	1.9
<i>June quarter 1994</i>	1.8	1.6	1.6	1.6	1.5	1.5	1.4	1.4	1.4	2.1	1.7	1.9
TAKINGS FROM ACCOMMODATION (\$'000)												
<i>June quarter 1993</i>	264	2,218	2,482	329	586	915	927	1,955	2,882	14,594	16,581	31,175
<i>1994—</i>												
April	86	917	1,003	120	234	354	288	671	958	6,115	6,593	12,708
May	88	682	770	113	206	319	299	702	1,001	5,337	5,209	10,547
June	68	598	666	104	174	278	307	660	967	4,616	4,676	9,292
<i>June quarter 1994</i>	242	2,197	2,439	337	614	951	894	2,032	2,926	16,068	16,478	32,547

(a) From December quarter 1993, establishments with fewer than 5 rooms have been formally excluded from the scope of this collection. See Explanatory Note 2 (page 21).

TABLE 7A — LICENSED HOTELS AND MOTELS AND GUEST HOUSES WITH FACILITIES: STATISTICAL

Statistical Subdivisions and selected Statistical Local Areas	Establish- ments	Guest rooms	Bed spaces	Employ- ment (persons)	Room nights occupied				Room occupancy rates (per cent)			
					Apr.	May	June	June qtr	Apr.	May	June	June qtr
LICENSED HOTELS WITH FACILITIES												
Northern and Southern (SSDs)	23	483	1,332	1,231	7,688	6,539	6,910	21,137	53.1	43.7	47.7	48.1
Western (SSD)	10	178	381	302	2,807	2,605	2,198	7,610	52.6	47.2	41.2	47.0
Adelaide (C)	12	1,982	4,340	1,554	39,370	34,479	29,645	103,494	66.2	56.1	49.9	57.4
Eastern (SSD) — Balance	6	94	256	288	1,203	923	899	3,025	42.7	31.7	31.9	35.4
Eastern (SSD)	18	2,076	4,596	1,842	40,573	35,402	30,544	106,519	65.1	55.0	49.0	56.4
Barossa, Kangaroo Island, Onkaparinga, Fleurieu and Lower North (SSDs)	10	271	847	322	4,564	3,385	3,152	11,101	56.1	40.3	38.8	45.0
Yorke (SSD)	8	102	286	72	984	753	643	2,380	32.2	23.8	21.0	25.6
Riverland (SSD)	6	322	875	343	4,490	4,265	4,256	13,011	46.5	42.7	44.1	44.4
Murray Mallee (SSD)	3	36	80	58	414	337	310	1,061	38.3	30.2	28.7	32.4
Upper South East (SSD)	4	81	203	88	819	839	683	2,341	33.7	33.4	28.1	31.8
Lower South East (SSD)	5	85	202	98	1,429	1,394	977	3,800	56.0	52.9	38.3	49.1
Lincoln (SSD)	9	125	287	149	1,362	1,120	1,124	3,606	36.3	28.9	30.0	31.7
West Coast (SSD)	4	138	409	92	1,284	1,421	1,129	3,834	31.0	33.2	27.3	30.5
Whyalla (SSD)	6	145	378	186	1,738	1,958	1,697	5,393	40.0	43.6	39.0	40.9
Flinders Ranges (SSD)	4	93	252	45	915	1,008	718	2,641	32.8	35.0	25.7	31.2
Pirie and Far North (SSDs)	6	285	807	127	2,723	2,564	3,818	9,105	31.8	29.0	44.7	35.1
<i>Total South Australia</i>	<i>116</i>	<i>4,420</i>	<i>10,935</i>	<i>4,955</i>	<i>71,790</i>	<i>63,590</i>	<i>58,159</i>	<i>193,539</i>	<i>54.1</i>	<i>46.4</i>	<i>43.9</i>	<i>48.1</i>
MOTELS AND GUEST HOUSES WITH FACILITIES												
Northern and Southern (SSDs)	23	832	2,572	308	13,469	9,900	9,778	33,147	54.0	38.4	39.2	43.8
Western (SSD)	5	127	356	48	1,817	1,738	1,428	4,983	47.7	44.1	37.5	43.1
Adelaide (C)	16	936	2,729	415	19,439	17,345	15,382	52,166	69.2	59.8	54.8	61.2
Eastern (SSD) — Balance	20	750	2,379	225	14,106	10,595	9,899	34,600	62.7	45.6	44.0	50.7
Eastern (SSD)	36	1,686	5,108	640	33,545	27,940	25,281	86,766	66.3	53.5	50.0	56.6
Barossa, Kangaroo Island, Onkaparinga, Fleurieu and Lower North (SSDs)	42	849	2,700	365	13,705	10,044	7,040	30,789	53.8	38.2	27.6	39.9
Yorke (SSD)	10	153	503	52	2,334	1,730	1,385	5,449	50.8	36.5	30.2	39.1
Riverland (SSD)	13	245	800	89	3,674	3,298	3,033	10,005	50.0	43.4	41.3	44.9
Murray Mallee (SSD)	10	164	500	48	2,674	2,190	2,042	6,906	54.3	43.1	41.5	46.3
Robe (DC)	6	92	314	28	1,322	623	497	2,442	47.9	21.8	18.0	29.2
Lacepede (DC)	3	51	161	18	609	462	384	1,455	39.8	29.2	25.1	31.4
Upper South East (SSD) — Balance	8	165	472	55	2,746	2,404	2,095	7,245	55.5	47.0	42.3	48.3
Upper South East (SSD)	17	308	947	101	4,677	3,489	2,976	11,142	50.6	36.5	32.2	39.8
Lower South East (SSD)	26	693	2,137	242	11,373	8,906	7,695	27,974	54.7	41.5	37.0	44.4
Lincoln (SSD)	13	221	645	75	2,931	2,644	2,169	7,744	44.2	38.6	32.7	38.5
West Coast (SSD)	5	144	441	53	1,466	1,282	1,032	3,780	33.9	28.7	23.9	28.8
Whyalla (SSD)	5	117	330	64	1,811	1,995	1,797	5,603	51.6	55.0	51.2	52.6
Flinders Ranges (SSD)	12	379	1,196	151	5,844	6,062	5,591	17,497	51.4	51.6	49.2	50.7
Pirie and Far North (SSDs)	12	259	728	124	3,654	3,872	4,039	11,565	47.0	48.2	52.0	49.1
<i>Total South Australia</i>	<i>229</i>	<i>6,177</i>	<i>18,963</i>	<i>2,360</i>	<i>102,974</i>	<i>85,090</i>	<i>75,286</i>	<i>263,350</i>	<i>55.6</i>	<i>44.4</i>	<i>40.6</i>	<i>46.9</i>

SUBDIVISIONS AND SELECTED STATISTICAL LOCAL AREAS, SOUTH AUSTRALIA, JUNE QUARTER 1994

<i>Guest nights</i>				<i>Guest arrivals</i>				<i>Takings from accommodation (\$'000)</i>			
<i>Apr.</i>	<i>May</i>	<i>June</i>	<i>June qtr</i>	<i>Apr.</i>	<i>May</i>	<i>June</i>	<i>June qtr</i>	<i>Apr.</i>	<i>May</i>	<i>June</i>	<i>June qtr</i>
LICENSED HOTELS WITH FACILITIES											
12,513	9,198	10,410	32,121	4,255	3,418	3,964	11,637	687	561	527	1,775
3,928	3,162	2,637	9,727	1,265	1,273	976	3,514	144	133	109	386
58,720	47,555	41,352	147,627	21,821	19,270	17,982	59,073	4,139	3,632	3,026	10,796
2,081	1,753	1,460	5,294	805	620	665	2,090	93	79	73	245
60,801	49,308	42,812	152,921	22,626	19,890	18,647	61,163	4,232	3,711	3,099	11,042
9,346	6,139	5,459	20,944	5,564	3,689	3,502	12,755	296	205	193	695
1,631	1,132	858	3,621	847	626	486	1,959	33	23	18	74
7,563	6,524	5,944	20,031	4,866	4,663	4,060	13,589	216	196	182	594
562	435	392	1,389	304	220	275	799	13	9	9	31
1,291	1,263	994	3,548	898	656	813	2,367	33	39	27	99
2,204	1,991	1,420	5,615	1,122	871	648	2,641	53	49	41	143
1,815	1,420	1,436	4,671	881	797	838	2,516	50	43	43	137
2,225	2,223	1,710	6,158	1,549	1,599	1,175	4,323	69	70	60	200
2,813	2,640	2,248	7,701	1,162	1,123	1,010	3,295	69	75	64	208
1,496	1,594	1,135	4,225	1,212	1,255	957	3,424	39	43	29	111
5,284	4,472	6,630	16,386	4,241	3,723	5,292	13,256	179	182	214	575
113,472	91,501	84,085	289,058	50,792	43,803	42,643	137,238	6,115	5,337	4,616	16,068
MOTELS AND GUEST HOUSES WITH FACILITIES											
26,599	17,211	16,930	60,740	12,427	8,842	8,564	29,833	908	669	647	2,224
2,828	2,596	2,220	7,644	1,966	1,711	1,515	5,192	115	108	87	310
31,666	25,058	22,428	79,152	15,558	13,026	12,631	41,215	1,529	1,255	1,141	3,925
28,206	18,082	18,011	64,299	12,895	9,637	10,073	32,605	833	567	552	1,952
59,872	43,140	40,439	143,451	28,453	22,663	22,704	73,820	2,362	1,822	1,693	5,877
29,418	18,004	13,413	60,835	15,693	10,138	8,220	34,051	924	645	478	2,046
4,836	2,883	2,314	10,033	2,670	1,842	1,537	6,049	120	85	69	273
7,345	5,665	5,328	18,338	4,392	3,296	3,148	10,836	214	187	176	577
5,050	3,546	3,142	11,738	3,884	2,886	2,509	9,279	129	104	95	327
2,982	1,168	950	5,100	2,084	834	658	3,576	65	29	23	118
1,221	828	653	2,702	1,074	788	568	2,430	32	22	18	72
5,038	3,603	3,281	11,922	3,723	2,523	2,382	8,628	137	113	104	354
9,241	5,599	4,884	19,724	6,881	4,145	3,608	14,634	234	164	145	544
21,073	13,644	11,966	46,683	11,811	8,116	6,598	26,525	683	517	453	1,653
5,133	4,226	3,319	12,678	3,175	2,761	2,028	7,964	156	141	120	417
2,658	1,985	1,597	6,240	2,054	1,467	1,241	4,762	79	65	54	197
2,533	2,523	2,189	7,245	1,616	1,735	1,524	4,875	116	137	116	369
11,822	11,206	10,865	33,893	8,717	8,874	8,351	25,942	354	340	316	1,009
5,808	5,590	6,208	17,606	4,056	3,836	4,280	12,172	201	225	229	654
194,216	137,818	124,814	456,848	107,795	82,312	75,827	265,934	6,593	5,209	4,676	16,478

TABLE 7B — HOTELS, MOTELS AND GUEST HOUSES WITH FACILITIES: STATISTICAL DIVISIONS AND SELECTED

Statistical Divisions and selected Subdivisions and Statistical Local Areas	Establish- ments	Guest rooms	Bed spaces	Employ- ment (persons)	Room nights occupied				Room occupancy rates (per cent)			
					Apr.	May	June	June qtr	Apr.	May	June	June qtr
					Enfield (C) — Pt A	6	143	416	144	2,723	2,141	2,386
Salisbury (C)	6	90	261	149	1,313	890	1,097	3,300	48.6	31.9	40.6	40.3
Northern (SSD) — Balance	7	166	413	141	1,303	959	1,230	3,492	26.2	18.6	24.7	23.1
Woodville (C)	6	125	283	164	1,877	1,961	1,718	5,556	50.1	50.6	45.8	48.8
Western (SSD) — Balance	9	180	454	186	2,747	2,382	1,908	7,037	50.9	42.7	35.3	43.0
Adelaide (C)	28	2,918	7,069	1,969	58,809	51,824	45,027	155,660	67.2	57.3	51.4	58.6
Burnside (C)	9	311	954	117	5,933	4,407	4,006	14,346	63.6	45.7	42.9	50.7
Kensington and Norwood (C)	3	161	485	56	2,625	1,718	1,628	5,971	54.3	34.4	33.7	40.8
Unley (C)	7	214	705	154	4,216	3,115	2,949	10,280	65.7	47.0	45.9	52.8
Eastern (SSD) — Balance	7	158	491	186	2,535	2,278	2,215	7,028	53.5	46.5	46.7	48.9
Glenside (C)	13	656	1,999	707	12,272	9,588	9,441	31,301	62.4	47.1	48.0	52.4
Marion (C)	5	76	229	197	943	750	692	2,385	41.4	31.8	30.4	34.5
Southern (SSD) — Balance	9	184	586	201	2,603	2,111	1,842	6,556	47.2	37.0	33.4	39.2
Adelaide (SD)	115	5,382	14,345	4,371	99,899	84,124	76,139	260,162	61.9	50.4	47.2	53.1
Tanunda (DC)	5	134	403	99	2,159	1,932	1,507	5,598	53.7	46.5	37.5	45.9
Barossa (SSD) — Balance	8	133	377	101	1,942	1,646	1,267	4,855	48.7	39.9	31.8	40.1
Dudley (DC)	4	91	270	26	1,406	907	381	2,694	51.5	32.2	14.0	32.5
Kingscote (DC)	5	111	308	81	2,235	1,182	627	4,044	67.1	34.4	18.8	40.0
Port Elliot and Goolwa (DC)	4	76	256	22	797	466	333	1,596	35.0	19.8	14.6	23.1
Victor Harbor (DC)	10	205	659	110	3,425	2,415	1,661	7,501	55.7	38.0	27.0	40.2
Outer Adelaide (SD) — Balance	7	229	849	165	3,760	2,775	2,445	8,980	54.7	39.1	35.6	43.1
Outer Adelaide (SD)	43	979	3,122	604	15,724	11,323	8,221	35,268	53.5	37.3	28.0	39.6
Northern Yorke Peninsula (DC)	4	56	195	24	967	763	686	2,416	57.6	44.0	40.8	47.4
Walleroo (M)	3	64	200	17	704	589	420	1,713	36.7	29.7	21.9	29.4
Yorke Peninsula (DC)	5	59	183	23	842	545	420	1,807	47.6	29.8	23.7	33.7
Yorke (SSD) — Balance	6	76	211	60	805	586	502	1,893	35.3	24.9	22.0	27.4
Lower North (SSD)	9	141	425	83	2,545	2,106	1,971	6,622	60.2	48.2	46.6	51.6
Yorke and Lower North (SD)	27	396	1,214	207	5,863	4,589	3,999	14,451	49.4	37.4	33.7	40.1
Barmera (DC)	3	115	330	52	1,716	1,484	1,351	4,551	49.7	41.6	39.2	43.5
Renmark (M)	5	173	513	108	2,293	1,851	1,877	6,021	44.2	34.5	36.2	38.2
Riverland (SSD) — Balance	11	279	832	272	4,155	4,228	4,061	12,444	49.6	48.9	48.5	49.0
Meningie (DC)	4	45	110	16	606	563	445	1,614	44.9	40.4	33.0	39.4
Murray Bridge (RC)	5	91	264	47	1,328	1,034	1,071	3,433	48.6	36.7	39.2	41.5
Murray Mallee (SSD) — Balance	4	64	206	43	1,154	930	836	2,920	60.1	46.9	43.5	50.1
Murray Lands (SD)	32	767	2,255	538	11,252	10,090	9,641	30,983	48.9	42.4	41.9	44.4
Lacepede (DC)	3	51	161	18	609	462	384	1,455	39.8	29.2	25.1	31.4
Naracoorte (M)	6	112	298	69	1,612	1,500	1,093	4,205	48.0	43.2	32.5	41.3
Robe (DC)	6	92	314	28	1,322	623	497	2,442	47.9	21.8	18.0	29.2
Tatiara (DC)	6	134	377	74	1,953	1,743	1,685	5,381	48.6	42.0	41.9	44.1
Millicent (DC)	3	76	218	36	917	898	511	2,326	40.2	38.1	22.4	33.6
Mount Gambier (C)	21	616	1,844	253	10,408	8,398	7,373	26,179	56.3	44.0	39.9	46.7
Lower South East (SSD) — Balance	7	86	277	51	1,477	1,004	788	3,269	57.2	37.7	30.5	41.8
South East (SD)	52	1,167	3,489	529	18,298	14,628	12,331	45,257	52.3	40.4	35.2	42.6
Port Lincoln (C)	10	178	506	129	2,583	2,349	2,095	7,027	48.4	42.6	39.2	43.4
Lincoln (SSD) — Balance	12	168	426	95	1,710	1,415	1,198	4,323	33.9	27.2	23.8	28.3
Murat Bay (DC) and Streaky Bay (DC)	6	202	557	115	2,149	1,969	1,585	5,703	35.5	31.4	26.2	31.0
Unincorporated West Coast	3	80	293	30	601	734	576	1,911	25.0	29.6	24.0	26.3
Eyre (SD)	31	628	1,782	369	7,043	6,467	5,454	18,964	37.4	33.2	28.9	33.2
Whyalla (SSD)	11	262	708	250	3,549	3,953	3,494	10,996	45.2	48.7	44.5	46.1
Pirie (SSD)	9	167	470	77	2,536	2,687	2,695	7,918	50.6	51.9	53.8	52.1
Port Augusta (C)	9	299	873	112	5,175	5,599	5,345	16,119	57.7	60.4	59.6	59.2
Flinders Ranges (SSD) — Balance	7	173	575	84	1,584	1,471	964	4,019	30.5	27.4	18.6	25.5
Far North (SSD)	9	377	1,065	174	3,841	3,749	5,162	12,752	34.0	32.1	45.6	37.2
Northern (SD)	45	1,278	3,691	697	16,685	17,459	17,660	51,804	43.5	44.1	46.1	44.5
South Australia	345	10,597	29,898	7,315	174,764	148,680	133,445	456,889	55.0	45.3	42.0	47.4

SUBDIVISIONS AND STATISTICAL LOCAL AREAS, SOUTH AUSTRALIA, JUNE QUARTER 1994

<i>Guest nights</i>				<i>Guest arrivals</i>				<i>Takings from accommodation (\$'000)</i>			
<i>Apr.</i>	<i>May</i>	<i>June</i>	<i>June qtr</i>	<i>Apr.</i>	<i>May</i>	<i>June</i>	<i>June qtr</i>	<i>Apr.</i>	<i>May</i>	<i>June</i>	<i>June qtr</i>
5,156	3,555	3,773	12,484	1,935	1,740	1,646	5,321	182	142	149	473
2,544	1,425	1,768	5,737	1,109	852	906	2,867	62	41	47	150
2,604	1,652	2,181	6,437	1,542	991	1,187	3,720	75	54	71	200
2,475	2,330	2,134	6,939	1,038	1,093	903	3,034	112	115	99	327
4,281	3,428	2,723	10,432	2,193	1,891	1,588	5,672	146	126	97	369
90,386	72,613	63,780	226,779	37,379	32,296	30,613	100,288	5,667	4,887	4,167	14,722
12,141	7,726	7,781	27,648	6,288	4,267	4,519	15,074	291	190	188	669
4,957	2,777	2,663	10,397	1,971	1,421	1,399	4,791	198	125	118	441
8,617	5,817	5,697	20,131	3,568	2,914	3,084	9,566	249	170	163	582
4,572	3,515	3,330	11,417	1,873	1,655	1,736	5,264	188	161	156	505
22,021	14,966	15,212	52,199	8,667	6,273	6,488	21,428	1,087	831	762	2,681
2,091	1,354	1,346	4,791	933	657	680	2,270	53	37	34	124
4,696	3,457	3,060	11,213	2,496	1,747	1,621	5,864	137	124	110	371
166,541	124,615	115,448	406,604	70,992	57,797	56,370	185,159	8,448	7,003	6,163	21,614
4,395	3,357	2,765	10,517	2,855	2,172	1,847	6,874	127	117	92	336
3,598	2,681	2,157	8,436	2,261	1,622	1,347	5,230	116	93	76	285
2,929	1,522	728	5,179	1,040	502	285	1,827	75	37	17	130
4,398	2,121	1,103	7,622	2,088	1,231	731	4,050	143	73	37	253
1,818	933	670	3,421	1,018	570	441	2,029	48	27	20	96
8,088	5,051	3,518	16,657	4,280	2,603	2,150	9,033	236	170	122	529
8,411	4,791	4,627	17,829	3,850	2,550	2,535	8,935	320	210	199	730
33,637	20,456	15,568	69,661	17,392	11,250	9,336	37,978	1,067	729	563	2,358
1,733	1,155	1,017	3,905	1,209	879	720	2,808	54	42	38	134
1,411	968	735	3,114	768	519	471	1,758	29	23	15	67
1,949	1,030	774	3,753	820	563	443	1,826	42	25	21	88
1,374	862	646	2,882	720	507	389	1,616	27	18	13	58
5,127	3,687	3,304	12,118	3,865	2,577	2,386	8,828	154	121	107	382
11,594	7,702	6,476	25,772	7,382	5,045	4,409	16,836	307	229	193	729
3,182	2,519	2,322	8,023	1,446	1,102	1,011	3,559	82	75	68	225
4,350	3,013	3,169	10,532	2,685	2,012	2,014	6,711	119	90	93	302
7,376	6,657	5,781	19,814	5,127	4,845	4,183	14,155	229	219	197	644
1,073	954	705	2,732	893	794	612	2,299	27	25	19	70
2,514	1,577	1,561	5,652	1,893	1,344	1,309	4,546	59	49	48	156
2,025	1,450	1,268	4,743	1,402	968	863	3,233	56	39	37	132
20,520	16,170	14,806	51,496	13,446	11,065	9,992	34,503	571	496	462	1,529
1,221	828	653	2,702	1,074	788	568	2,430	32	22	18	72
3,003	2,341	1,612	6,956	1,852	1,295	1,029	4,176	76	73	52	201
2,982	1,168	950	5,100	2,084	834	658	3,576	65	29	23	118
3,326	2,525	2,663	8,514	2,769	1,884	2,166	6,819	94	79	79	252
1,321	1,083	639	3,043	791	567	398	1,756	37	32	21	90
18,929	12,749	11,309	42,987	10,161	7,096	5,847	23,104	598	464	417	1,479
3,027	1,803	1,438	6,268	1,981	1,324	1,001	4,306	101	70	56	227
33,809	22,497	19,264	75,570	20,712	13,788	11,667	46,167	1,003	770	666	2,439
4,383	3,638	3,113	11,134	2,450	2,248	1,710	6,408	137	125	112	374
2,565	2,008	1,642	6,215	1,606	1,310	1,156	4,072	69	59	52	180
3,609	2,886	2,229	8,724	2,493	1,929	1,570	5,992	112	95	82	289
1,274	1,322	1,078	3,674	1,110	1,137	846	3,093	36	40	33	108
11,831	9,854	8,062	29,747	7,659	6,624	5,282	19,565	354	319	278	951
5,346	5,163	4,437	14,946	2,778	2,858	2,534	8,170	185	212	179	577
3,982	3,742	4,019	11,743	2,822	2,753	2,905	8,480	113	136	129	379
9,756	9,884	10,256	29,896	7,809	8,328	8,044	24,181	284	297	283	864
3,562	2,916	1,744	8,222	2,120	1,801	1,264	5,185	109	86	62	256
7,110	6,320	8,819	22,249	5,475	4,806	6,667	16,948	267	270	313	851
29,756	28,025	29,275	87,056	21,004	20,546	21,414	62,964	958	1,001	967	2,926
307,688	229,319	208,899	745,906	158,587	126,115	118,470	403,172	12,708	10,547	9,292	32,547

TABLE 8 — HOLIDAY FLATS, UNITS AND HOUSES: STATISTICAL DIVISIONS AND SELECTED SUBDIVISIONS, SOUTH AUSTRALIA

Particulars	Adelaide (SD)			Total	Outer Adelaide (SD)		Total
	Western (SSD)	Eastern (SSD)	Southern (SSD)		Kangaroo Island (SSD)	Barossa and Fleurieu (SSDs)	
LETTING ENTITIES, CAPACITY AND EMPLOYMENT							
<i>June quarter 1993—</i>							
Letting entities	11	13	13	37	8	9	17
Flats, units and houses							
Single bedroom	31	140	64	235	n.p.	n.p.	35
Multiple bedroom	89	110	148	347	n.p.	n.p.	349
<i>Total flats, units and houses</i>	<i>120</i>	<i>250</i>	<i>212</i>	<i>582</i>	<i>n.p.</i>	<i>n.p.</i>	<i>384</i>
Bed spaces	504	929	936	2,369	n.p.	n.p.	2,261
Employment (persons) (a)	30	83	53	166	n.p.	n.p.	28
<i>June quarter 1994—</i>							
Letting entities	11	13	14	38	10	9	19
Flats, units and houses							
Single bedroom	31	88	61	180	19	17	36
Multiple bedroom	87	123	171	381	49	320	369
<i>Total flats, units and houses</i>	<i>118</i>	<i>211</i>	<i>232</i>	<i>561</i>	<i>68</i>	<i>337</i>	<i>405</i>
Bed spaces	482	835	1,080	2,397	330	2,023	2,353
Employment (persons) (a)	26	76	57	159	18	12	30
UNIT NIGHTS OCCUPIED							
<i>June quarter 1993</i>	<i>5,993</i>	<i>12,133</i>	<i>8,973</i>	<i>27,099</i>	<i>n.p.</i>	<i>n.p.</i>	<i>8,502</i>
<i>1994—</i>							
April	1,836	4,386	3,889	10,111	1,307	3,779	5,086
May	1,607	3,560	2,959	8,126	665	1,855	2,520
June	1,527	3,515	2,796	7,838	258	1,222	1,480
<i>June quarter 1994</i>	<i>4,970</i>	<i>11,461</i>	<i>9,644</i>	<i>26,075</i>	<i>2,230</i>	<i>6,856</i>	<i>9,086</i>
UNIT OCCUPANCY RATES (per cent)							
<i>June quarter 1993</i>	<i>54.9</i>	<i>53.3</i>	<i>46.5</i>	<i>51.2</i>	<i>n.p.</i>	<i>n.p.</i>	<i>24.3</i>
<i>1994—</i>							
April	51.9	69.3	55.9	60.1	71.4	37.4	42.6
May	43.9	54.4	41.1	46.7	32.5	17.8	20.2
June	43.1	55.5	40.2	46.6	12.6	12.1	12.2
<i>June quarter 1994</i>	<i>46.3</i>	<i>59.7</i>	<i>45.7</i>	<i>51.1</i>	<i>37.7</i>	<i>22.4</i>	<i>24.8</i>
UNIT LETTINGS							
<i>June quarter 1993</i>	<i>891</i>	<i>1,922</i>	<i>1,396</i>	<i>4,209</i>	<i>n.p.</i>	<i>n.p.</i>	<i>1,929</i>
<i>1994—</i>							
April	279	591	659	1,529	310	729	1,039
May	237	554	515	1,306	190	399	589
June	227	510	504	1,241	92	320	412
<i>June quarter 1994</i>	<i>743</i>	<i>1,655</i>	<i>1,678</i>	<i>4,076</i>	<i>592</i>	<i>1,448</i>	<i>2,040</i>
AVERAGE LENGTH OF STAY (days)							
<i>June quarter 1993</i>	<i>6.7</i>	<i>6.3</i>	<i>6.4</i>	<i>6.4</i>	<i>n.p.</i>	<i>n.p.</i>	<i>4.4</i>
<i>1994—</i>							
April	6.6	7.4	5.9	6.6	4.2	5.2	4.9
May	6.8	6.4	5.7	6.2	3.5	4.6	4.3
June	6.7	6.9	5.5	6.3	2.8	3.8	3.6
<i>June quarter 1994</i>	<i>6.7</i>	<i>6.9</i>	<i>5.7</i>	<i>6.4</i>	<i>3.8</i>	<i>4.7</i>	<i>4.5</i>
TAKINGS FROM ACCOMMODATION (\$'000)							
<i>June quarter 1993</i>	<i>320</i>	<i>791</i>	<i>479</i>	<i>1,589</i>	<i>n.p.</i>	<i>n.p.</i>	<i>374</i>
<i>1994—</i>							
April	100	274	219	593	67	179	246
May	91	226	162	480	29	74	103
June	87	215	152	454	13	53	66
<i>June quarter 1994</i>	<i>279</i>	<i>714</i>	<i>534</i>	<i>1,527</i>	<i>109</i>	<i>306</i>	<i>415</i>

TABLE 8 — HOLIDAY FLATS, UNITS AND HOUSES: STATISTICAL DIVISIONS AND SELECTED SUBDIVISIONS,
SOUTH AUSTRALIA—continued

Particulars	Yorke and Lower North (SD)	Murray Lands and South East (SDs)	Eyre (SD)	Northern (SD)	South Australia
LETTING ENTITIES, CAPACITY AND EMPLOYMENT					
June quarter 1993—					
Letting entities	9	8	9	6	86
Flats, units and houses					
Single bedroom	43	24	26	7	370
Multiple bedroom	54	120	52	46	968
Total flats, units and houses	97	144	78	53	1,338
Bed spaces	488	843	379	281	6,621
Employment (persons)(a)	23	13	19	21	270
June quarter 1994—					
Letting entities	10	7	9	6	89
Flats, units and houses					
Single bedroom	43	22	28	8	317
Multiple bedroom	60	114	50	47	1,021
Total flats, units and houses	103	136	78	55	1,338
Bed spaces	505	846	369	287	6,757
Employment (persons)(a)	27	10	20	20	266
UNIT NIGHTS OCCUPIED					
June quarter 1993	3,617	1,946	2,534	1,135	44,833
1994—					
April	1,700	1,063	1,097	461	19,518
May	1,071	421	726	302	13,166
June	807	254	505	280	11,164
June quarter 1994	3,578	1,738	2,328	1,043	43,848
UNIT OCCUPANCY RATES (per cent)					
June quarter 1993	41.0	14.9	35.7	23.5	36.8
1994—					
April	55.0	26.1	46.9	27.9	48.9
May	33.5	10.0	30.0	17.7	31.8
June	26.1	6.2	21.6	17.0	27.8
June quarter 1994	38.2	14.0	32.8	20.8	36.1
UNIT LETTINGS					
June quarter 1993	1,481	558	453	431	9,061
1994—					
April	707	283	200	191	3,949
May	400	115	147	151	2,708
June	348	73	97	148	2,319
June quarter 1994	1,455	471	444	490	8,976
AVERAGE LENGTH OF STAY (days)					
June quarter 1993	2.4	3.5	5.6	2.6	4.9
1994—					
April	2.4	3.8	5.5	2.4	4.9
May	2.7	3.7	4.9	2.0	4.9
June	2.3	3.5	5.2	1.9	4.8
June quarter 1994	2.5	3.7	5.2	2.1	4.9
TAKINGS FROM ACCOMMODATION (\$'000)					
June quarter 1993	145	87	93	70	2,359
1994—					
April	59	43	49	29	1,019
May	45	16	29	19	692
June	34	10	21	18	602
June quarter 1994	138	69	99	66	2,313

(a) Employment numbers exclude real estate agents and their employees.

TABLE 9 — CARAVAN PARKS BY STATISTICAL DIVISION, SOUTH AUSTRALIA

Particulars	Adelaide (SD)			Outer Adelaide (SD)			Yorke and Lower North (SD)	Murray Lands (SD)		
	Short-term	Long-term	Total	Short-term	Long-term	Total	Total	Short-term	Long-term	Total
ESTABLISHMENTS, CAPACITY AND EMPLOYMENT										
<i>June quarter 1993—</i>										
Establishments	13	13	26	22	7	29	36	25	9	34
Capacity										
On-site vans	211	49	260	116	40	156	123	129	85	214
Other powered sites	1,227	1,407	2,634	2,207	437	2,644	2,453	1,588	421	2,009
Unpowered sites	308	110	418	1,051	431	1,482	475	808	167	975
Cabins, flats, etc.	192	175	367	190	36	226	159	170	62	232
<i>Total capacity</i>	<i>1,938</i>	<i>1,741</i>	<i>3,679</i>	<i>3,564</i>	<i>944</i>	<i>4,508</i>	<i>3,210</i>	<i>2,695</i>	<i>735</i>	<i>3,430</i>
Sites occupied by long-term guests	153	949	1,102	128	123	251	112	91	112	203
Other sites permanently reserved	25	9	34	511	3	514	592	165	13	178
Employment (persons)	94	71	165	75	16	91	103	71	30	101
<i>June quarter 1994—</i>										
Establishments	12	14	26	22	7	29	36	25	9	34
Capacity										
On-site vans	193	52	245	115	34	149	115	119	75	194
Other powered sites	1,064	1,477	2,541	2,184	425	2,609	2,468	1,596	429	2,025
Unpowered sites	283	129	412	1,054	381	1,435	498	800	169	969
Cabins, flats, etc.	200	174	374	197	34	231	177	179	63	242
<i>Total capacity</i>	<i>1,740</i>	<i>1,832</i>	<i>3,572</i>	<i>3,550</i>	<i>874</i>	<i>4,424</i>	<i>3,258</i>	<i>2,694</i>	<i>736</i>	<i>3,430</i>
Sites occupied by long-term guests	128	935	1,063	136	121	257	110	97	122	219
Other sites permanently reserved	19	15	34	543	5	548	605	254	14	268
Employment (persons)	77	62	139	77	16	93	102	64	29	93
SITE NIGHTS OCCUPIED										
<i>June quarter 1993</i>	<i>55,938</i>	<i>99,148</i>	<i>155,086</i>	<i>93,904</i>	<i>16,402</i>	<i>110,306</i>	<i>111,275</i>	<i>46,674</i>	<i>22,313</i>	<i>68,987</i>
<i>1994—</i>										
April	23,571	32,309	55,880	38,018	6,120	44,138	47,466	23,863	8,822	32,685
May	17,529	31,772	49,301	28,411	4,966	33,377	35,693	17,935	7,089	25,024
June	14,933	31,541	46,474	25,093	4,559	29,652	30,783	16,616	6,308	22,924
<i>June quarter 1994</i>	<i>56,033</i>	<i>95,622</i>	<i>151,655</i>	<i>91,522</i>	<i>15,645</i>	<i>107,167</i>	<i>113,942</i>	<i>58,414</i>	<i>22,219</i>	<i>80,633</i>
SITE OCCUPANCY RATES (per cent)										
<i>June quarter 1993</i>	<i>31.7</i>	<i>62.6</i>	<i>46.3</i>	<i>29.0</i>	<i>19.1</i>	<i>26.9</i>	<i>38.1</i>	<i>19.0</i>	<i>33.4</i>	<i>22.1</i>
<i>1994—</i>										
April	45.2	58.8	52.1	35.7	23.3	33.3	48.6	29.5	40.0	31.8
May	32.5	55.9	44.5	25.8	18.3	24.3	35.3	21.5	31.1	23.5
June	28.6	57.4	43.4	23.6	17.4	22.3	31.5	20.6	28.6	22.3
<i>June quarter 1994</i>	<i>35.4</i>	<i>57.4</i>	<i>46.7</i>	<i>28.3</i>	<i>19.7</i>	<i>26.6</i>	<i>38.4</i>	<i>23.8</i>	<i>33.2</i>	<i>25.8</i>
TAKINGS FROM ACCOMMODATION (\$'000)										
<i>June quarter 1993</i>	<i>1,077</i>	<i>786</i>	<i>1,863</i>	<i>859</i>	<i>197</i>	<i>1,056</i>	<i>944</i>	<i>543</i>	<i>265</i>	<i>809</i>
<i>1994—</i>										
April	520	256	776	407	74	481	417	244	125	368
May	327	251	578	213	55	268	236	176	82	258
June	276	258	534	159	48	207	183	154	80	234
<i>June quarter 1994</i>	<i>1,123</i>	<i>765</i>	<i>1,888</i>	<i>778</i>	<i>177</i>	<i>955</i>	<i>836</i>	<i>574</i>	<i>287</i>	<i>860</i>

TABLE 9 — CARAVAN PARKS BY STATISTICAL DIVISION, SOUTH AUSTRALIA—continued

Particulars	South East (SD)			Eyre (SD)	Northern (SD)	South Australia		
	Short-term	Long-term	Total	Total	Total	Short-term	Long-term	Total
ESTABLISHMENTS, CAPACITY AND EMPLOYMENT								
<i>June quarter 1993—</i>								
Establishments	18	6	24	23	39	170	41	211
Capacity								
On-site vans	101	52	153	84	187	935	242	1,177
Other powered sites	1,538	199	1,737	1,544	1,804	12,089	2,736	14,825
Unpowered sites	618	125	743	870	1,866	5,798	1,031	6,829
Cabins, flats, etc.	111	84	195	182	242	1,216	387	1,603
<i>Total capacity</i>	<i>2,368</i>	<i>460</i>	<i>2,828</i>	<i>2,680</i>	<i>4,099</i>	<i>20,038</i>	<i>4,396</i>	<i>24,434</i>
Sites occupied by								
long-term guests	24	73	97	53	180	632	1,366	1,998
Other sites permanently reserved	9	1	10	41	21	1,359	31	1,390
Employment (persons)	65	24	89	96	117	607	155	762
<i>June quarter 1994—</i>								
Establishments	18	6	24	23	39	167	44	211
Capacity								
On-site vans	105	57	162	90	191	902	244	1,146
Other powered sites	1,545	202	1,747	1,548	1,803	11,873	2,868	14,741
Unpowered sites	436	135	571	875	1,809	5,527	1,042	6,569
Cabins, flats, etc.	132	85	217	184	255	1,289	391	1,680
<i>Total capacity</i>	<i>2,218</i>	<i>479</i>	<i>2,697</i>	<i>2,697</i>	<i>4,058</i>	<i>19,591</i>	<i>4,545</i>	<i>24,136</i>
Sites occupied by								
long-term guests	23	57	80	62	193	616	1,368	1,984
Other sites permanently reserved	12	—	12	42	29	1,502	36	1,538
Employment (persons)	76	23	99	81	126	586	147	733
SITE NIGHTS OCCUPIED								
<i>June quarter 1993</i>	<i>22,264</i>	<i>10,886</i>	<i>33,150</i>	<i>35,499</i>	<i>62,754</i>	<i>415,132</i>	<i>161,925</i>	<i>577,057</i>
<i>1994—</i>								
April	11,232	3,734	14,966	16,983	22,951	179,026	56,043	235,069
May	4,514	2,815	7,329	11,764	23,520	133,992	52,016	186,008
June	3,518	2,601	6,119	7,376	23,364	116,295	50,397	166,692
<i>June quarter 1994</i>	<i>19,264</i>	<i>9,150</i>	<i>28,414</i>	<i>36,123</i>	<i>69,835</i>	<i>429,313</i>	<i>158,456</i>	<i>587,769</i>
SITE OCCUPANCY RATES (per cent)								
<i>June quarter 1993</i>	<i>10.3</i>	<i>26.0</i>	<i>12.9</i>	<i>14.6</i>	<i>16.8</i>	<i>22.8</i>	<i>40.5</i>	<i>26.0</i>
<i>1994—</i>								
April	16.9	26.0	18.5	21.0	18.9	30.5	41.1	32.5
May	7.4	19.0	9.6	14.1	18.7	22.3	36.9	25.1
June	5.9	18.1	8.3	9.1	19.2	20.0	37.0	23.3
<i>June quarter 1994</i>	<i>10.3</i>	<i>21.0</i>	<i>12.3</i>	<i>14.7</i>	<i>18.9</i>	<i>24.3</i>	<i>38.3</i>	<i>26.9</i>
TAKINGS FROM ACCOMMODATION (\$'000)								
<i>June quarter 1993</i>	<i>377</i>	<i>183</i>	<i>561</i>	<i>443</i>	<i>850</i>	<i>4,961</i>	<i>1,564</i>	<i>6,525</i>
<i>1994—</i>								
April	205	70	275	237	295	2,284	566	2,850
May	81	45	126	149	291	1,428	477	1,906
June	59	49	108	96	297	1,181	477	1,658
<i>June quarter 1994</i>	<i>344</i>	<i>165</i>	<i>509</i>	<i>482</i>	<i>883</i>	<i>4,893</i>	<i>1,521</i>	<i>6,414</i>

TABLE 10 — CARAVAN PARKS: STATISTICAL DIVISIONS AND SELECTED SUBDIVISIONS

Statistical Divisions and Selected Subdivisions and Statistical Local Areas	Capacity					Total	Sites occupied by long-term guests	Other sites permanently reserved	Employment (persons)
	Establishments	On-site vans	Other powered sites	Unpowered sites	Cabins, flats, etc.				
Northern (SSD)	7	23	883	70	72	1,048	618	—	36
Western and Eastern (SSDs)	5	96	499	163	144	902	50	—	48
Noarlunga (C)	5	24	434	34	97	589	274	4	20
Willunga (DC)	4	66	336	79	14	495	35	23	14
Southern (SSD) — Balance	5	36	389	66	47	538	86	7	21
<i>Adelaide (SD)</i>	26	245	2,541	412	374	3,572	1,063	34	139
Barossa (SSD)	8	44	676	625	49	1,394	91	10	30
Kangaroo Island (SSD)	4	17	93	67	19	196	2	1	7
Port Elliot and Goolwa (DC)	5	39	541	177	66	823	31	119	17
Yankalilla (DC)	4	7	413	145	29	594	9	189	8
Flourieu (SSD) — Balance and Onkaparinga (SSD)	8	42	886	421	68	1,417	124	229	31
<i>Outer Adelaide (SD)</i>	29	149	2,609	1,435	231	4,424	257	548	93
Central Yorke Peninsula (DC)	7	25	400	61	26	512	25	249	22
Minlaton (DC)	4	12	295	56	16	379	11	46	12
Yorketown (DC)	5	24	499	96	17	636	28	134	10
Yorke (SSD) — Balance	11	44	971	88	79	1,182	28	150	35
Lower North (SSD)	9	10	303	197	39	549	18	26	23
<i>Yorke and Lower North (SD)</i>	36	115	2,468	498	177	3,258	110	605	102
Riverland (SSD)	13	127	1,098	477	129	1,831	162	74	49
Meningie (DC)	6	20	276	246	41	583	6	5	17
Murray Bridge (RC)	6	36	230	109	39	414	32	39	13
Murray Mallee (SSD) — Balance	9	11	421	137	33	602	19	150	14
<i>Murray Lands (SD)</i>	34	194	2,025	969	242	3,430	219	268	93
Robe (DC)	3	13	333	100	34	480	1	—	19
Upper South East (SSD) — Balance	7	48	325	189	11	573	22	5	31
Mount Gambier (C)	3	50	370	15	63	498	19	—	20
Lower South East (SSD) — Balance	11	51	719	267	109	1,146	38	7	29
<i>South East (SD)</i>	24	162	1,747	571	217	2,697	80	12	99
Lincoln (SSD)	14	67	1,005	486	96	1,654	55	39	47
West Coast (SSD)	9	23	543	389	88	1,043	7	3	34
<i>Eyre (SD)</i>	23	90	1,548	875	184	2,697	62	42	81
Pirie (SSD)	10	39	334	230	20	623	32	2	19
Mount Remarkable (DC)	5	14	185	230	20	449	2	8	9
Port Augusta (C)	3	34	242	160	68	504	39	4	17
Unincorporated Flinders Ranges	4	7	93	213	7	320	2	—	11
Flinders Ranges (SSD) — Balance	4	34	237	170	29	470	2	4	16
Unincorporated Far North	7	11	177	468	52	708	—	—	29
Far North (SSD) — Balance and Whyalla (SSD)	6	52	535	338	59	984	116	11	25
<i>Northern (SD)</i>	39	191	1,803	1,809	255	4,058	193	29	126
<i>South Australia</i>									
Short-term parks	167	902	11,873	5,527	1,289	19,591	616	1,502	586
Long-term parks	44	244	2,868	1,042	391	4,545	1,368	36	147
Total	211	1,146	14,741	6,569	1,680	24,136	1,984	1,538	733

AND STATISTICAL LOCAL AREAS, SOUTH AUSTRALIA, JUNE QUARTER 1994

<i>Site nights occupied</i>				<i>Site occupancy rates (per cent)</i>				<i>Takings from accommodation (\$'000)</i>			
<i>Apr.</i>	<i>May</i>	<i>June</i>	<i>June qtr</i>	<i>Apr.</i>	<i>May</i>	<i>June</i>	<i>June qtr</i>	<i>Apr.</i>	<i>May</i>	<i>June</i>	<i>June qtr</i>
20,638	21,164	21,319	63,121	65.6	65.1	67.8	66.2	150	159	169	479
15,493	10,825	9,321	35,639	57.3	38.7	34.4	43.4	384	230	195	809
9,666	8,866	8,524	27,056	54.7	48.6	48.2	50.5	88	77	75	240
3,277	2,621	2,321	8,219	22.1	17.1	15.6	18.2	48	37	28	113
6,806	5,825	4,989	17,620	42.2	34.9	30.9	36.0	106	75	66	247
55,880	49,301	46,474	151,655	52.1	44.5	43.4	46.7	776	578	534	1,888
6,798	5,402	4,765	16,965	16.3	12.5	11.4	13.4	84	64	55	204
1,027	405	201	1,633	17.5	6.7	3.4	9.2	17	8	3	29
8,992	6,373	5,625	20,990	36.4	25.0	22.8	28.0	92	38	28	158
8,292	7,175	6,616	22,083	46.5	39.0	37.1	40.9	96	49	42	187
19,029	14,022	12,445	45,496	44.8	31.9	29.3	35.3	190	108	80	378
44,138	33,377	29,652	107,167	33.3	24.3	22.3	26.6	481	268	207	955
11,945	10,093	9,199	31,237	77.8	63.6	59.9	67.0	74	31	25	130
3,909	2,388	1,894	8,191	34.4	20.3	16.7	23.7	36	14	8	57
11,708	8,211	7,288	27,207	61.4	41.6	38.2	47.0	80	42	38	160
15,490	11,106	9,288	35,884	43.7	30.3	26.2	33.4	176	108	82	367
4,414	3,895	3,114	11,423	26.8	22.9	18.9	22.9	52	41	29	122
47,466	35,693	30,783	113,942	48.6	35.3	31.5	38.4	417	236	183	836
19,230	14,274	13,283	46,787	35.0	25.1	24.2	28.1	256	169	163	588
2,254	1,255	875	4,384	12.9	6.9	5.0	8.3	34	17	10	61
3,309	2,962	2,511	8,782	26.6	23.1	20.2	23.3	28	24	20	73
7,892	6,533	6,255	20,680	43.7	35.0	34.6	37.7	50	48	41	139
32,685	25,024	22,924	80,633	31.8	23.5	22.3	25.8	368	258	234	860
2,600	447	284	3,331	18.1	3.0	2.0	7.6	52	11	7	70
2,870	2,003	1,774	6,647	16.7	11.3	10.3	12.7	40	28	20	88
4,324	2,423	1,706	8,453	28.9	15.7	11.4	18.7	85	44	34	163
5,172	2,456	2,355	9,983	15.0	8.8	8.7	11.2	99	43	46	188
14,966	7,329	6,119	28,414	18.5	9.6	8.3	12.3	275	126	108	509
10,724	7,510	5,147	23,381	21.6	14.6	10.4	15.5	147	91	62	300
6,259	4,254	2,229	12,742	20.0	13.2	7.1	13.4	90	57	34	182
16,983	11,764	7,376	36,123	21.0	14.1	9.1	14.7	237	149	96	482
2,836	2,599	2,422	7,857	15.2	13.5	13.0	13.9	36	33	30	99
1,859	1,054	773	3,686	13.8	7.6	5.7	9.0	27	15	12	55
4,783	5,345	5,148	15,276	31.6	34.2	34.0	33.3	66	72	67	205
1,005	723	956	2,684	10.5	7.3	10.0	9.2	9	9	10	28
2,622	1,931	1,580	6,133	18.6	13.3	11.2	14.3	56	42	34	132
2,262	3,008	3,837	9,107	10.6	13.7	18.1	14.1	23	29	36	88
7,584	8,860	8,648	25,092	25.7	29.0	29.3	28.0	78	92	107	276
22,951	23,520	23,364	69,835	18.9	18.7	19.2	18.9	295	291	297	883
179,026	133,992	116,295	429,313	30.5	22.3	20.0	24.3	2,284	1,428	1,181	4,893
56,043	52,016	50,397	158,456	41.1	36.9	37.0	38.3	566	477	477	1,521
235,069	186,008	166,692	587,769	32.5	25.1	23.3	26.9	2,850	1,906	1,658	6,414

TABLE 11 — VISITOR HOSTELS BY STATISTICAL DIVISION, SOUTH AUSTRALIA

<i>Particulars</i>	<i>Adelaide (SD)</i>	<i>Outer Adelaide (SD)</i>	<i>Northern (SD)</i>	<i>Balance of State</i>	<i>South Australia</i>
ESTABLISHMENTS, CAPACITY AND EMPLOYMENT					
<i>June quarter 1993—</i>					
Establishments	16	7	8	9	40
Bed spaces	805	184	671	295	1,955
Employment (persons)	62	22	25	16	125
<i>June quarter 1994—</i>					
Establishments	18	9	10	9	46
Bed spaces	913	244	695	266	2,118
Employment (persons)	57	21	40	18	136
GUEST NIGHTS					
<i>June quarter 1993</i>	30,333	2,932	7,734	3,938	44,937
<i>1994—</i>					
April	13,405	1,749	4,464	1,748	21,366
May	10,261	1,223	3,322	1,258	16,064
June	8,777	923	3,673	907	14,280
<i>June quarter 1994</i>	32,443	3,895	11,459	3,913	51,710
BED OCCUPANCY RATES (per cent)					
<i>June quarter 1993</i>	41.4	17.5	12.7	14.7	25.3
<i>1994—</i>					
April	48.9	24.7	21.4	22.7	33.9
May	36.3	16.3	15.4	16.6	24.8
June	32.0	12.6	17.6	12.4	22.7
<i>June quarter 1994</i>	39.0	17.8	18.1	17.3	27.1
GUEST ARRIVALS					
<i>June quarter 1993</i>	12,268	2,137	6,654	1,518	22,577
<i>1994—</i>					
April	5,583	1,316	3,851	798	11,548
May	4,044	824	2,715	594	8,177
June	3,544	655	3,411	378	7,988
<i>June quarter 1994</i>	13,171	2,795	9,977	1,770	27,713
AVERAGE LENGTH OF STAY (days)					
<i>June quarter 1993</i>	2.5	1.4	1.2	2.6	2.0
<i>1994—</i>					
April	2.4	1.3	1.2	2.2	1.9
May	2.5	1.5	1.2	2.1	2.0
June	2.5	1.4	1.1	2.4	1.8
<i>June quarter 1994</i>	2.5	1.4	1.1	2.2	1.9
TAKINGS FROM ACCOMMODATION (\$'000)					
<i>June quarter 1993</i>	352	27	57	35	471
<i>1994—</i>					
April	137	16	34	14	202
May	105	12	24	9	150
June	87	9	25	9	130
<i>June quarter 1994</i>	329	38	83	32	482

EXPLANATORY NOTES

- *****
- INTRODUCTION**
- 1 This publication contains data for South Australia from a quarterly survey of tourist accommodation establishments. The period covered by the latest survey is the 3 months ended 30 June 1994.
- SCOPE**
- 2 Tourist accommodation establishments currently included in the survey comprise two groups:
- Establishments which provide predominantly short-term accommodation (i.e. for periods of less than 2 months) to the general public. These include:

Hotels, motels and guest houses, with facilities being hotels licensed to operate a public bar and motels, private hotels and guest houses all of which provide a bath (or shower) and toilet in most guest rooms and have breakfast available for guests.

NOTE: From December quarter 1993, hotel, motel and guest house establishments with fewer than five rooms have been formally excluded from the scope of this statistical collection. This change in scope resulted in the exclusion of 16 establishments which in the September quarter 1993 Survey aggregates for South Australia represented 4.5 per cent of hotel, motel and guest house establishments but accounted for less than 0.6 per cent of accommodation capacity, occupancy and takings respectively.

Holiday flats, units and houses (excluding establishments predominantly operated on a time share basis) which are operated by owners or managers who have sole letting rights to at least five flats, units or houses or by real estate agents for short-term letting. They are mainly self-contained in terms of cooking, bath (or shower) and toilet facilities and do not have breakfast available for guests. Data for holiday flats, units and houses include short-term owner occupation as well as paying guest occupation.

Visitor hostels which provide accommodation to visitors on a bed basis (rather than by the room). This category does not include establishments providing charity type accommodation (e.g. Salvation Army hostels) nor hotels, motels and guest houses without in-room facilities which provide accommodation on a per room basis.
 - *Caravan parks* which provide either predominantly short-term (i.e. for periods of less than 2 months) or predominantly long-term (i.e. for periods of 2 months or more) accommodation to the general public and which provide powered sites for caravans and toilet, shower and laundry facilities for guests.
- 3 Data collected and published for each type of establishment (other than holiday flats, units and houses) include both long-term and short-term guests at these establishments.
- 4 Establishments which provide more than one type of accommodation (e.g. a motel with attached caravan park) are treated as two or more separate establishments. However, self-contained units, flats, cabins, etc. attached to hotels, motels or to caravan parks are included in the capacity for those establishments and not treated as separate holiday flat, unit or house establishments.
- DEFINITIONS**
- 5 *Number of establishments.* For hotels, motels and guest houses, caravan parks and visitor hostels, the number of establishments within the scope of the survey which operated for any part of the survey period, or which closed temporarily for the quarter for seasonal reasons.
- 6 *Number of letting entities.* For holiday flats, units and houses, the number of owners, managers or real estate agents within the scope of the survey who operated for any part of the survey period.
- 7 Capacity in terms of *Guest rooms, Bed spaces, Holiday units* or *Caravan park sites, etc.* is the maximum number available to accommodate paying guests during the survey period. Capacity closed temporarily for seasonal reasons is included.
- 8 *Bed spaces.* Three-quarter beds are counted as one bed space; double beds as two bed spaces. Cots are excluded.
- 9 *Total caravan park capacity* comprises *On-site vans, Other powered sites, Unpowered sites* and *Cabins, etc.*
- *****

EXPLANATORY NOTES—continued

DEFINITIONS—continued

10 *Room nights available.* The number of guest rooms available multiplied by the number of days for which they were available during the survey period. Includes operating periods only for establishments closing (other than for seasonal reasons) or opening during the survey period.

11 Occupancy in terms of *Room nights*, *Unit nights* or *Site nights occupied* refers to the total number of nights each guest room, holiday unit or caravan park site, etc. was occupied during the survey period.

NOTE: From September quarter 1992, caravan park sites, etc. permanently reserved for 2 months or more at the end of the survey period but only casually occupied by their tenants have been recorded continuously as *Site nights occupied* irrespective of whether the tenants of individual sites were in residence on any particular night. (See also paragraph 14 below). Previously, usage of these sites was recorded as *Site nights occupied* only when their tenants were in the park. Total site occupancy rates from September quarter 1992 are therefore not comparable with those from previous quarters.

12 Occupancy in terms of *Guest nights* refers to the total number of nights each paying guest stayed during the survey period.

13 *Sites occupied by long-term guests.* The total number of sites, etc. occupied at the end of the survey period by guests who have stayed continuously for 2 months or more.

14 *Other sites permanently reserved.* The total number of powered and unpowered sites, on-site vans and cabins, etc. continuously let for 2 months or more by the end of the survey period to tenants who occupy the sites only on a casual or sporadic basis. Separate data for this item are available only from September quarter 1992.

15 *Occupancy rates* represent occupancy expressed as a percentage of total capacity available during the survey period – e.g.

$$\text{Room occupancy rate (\%)} \text{ for the period} = \frac{\text{Room nights occupied}}{(\text{Guest rooms}) \times (\text{No. of days in the period})} \times 100$$

providing that, for establishments closing (other than for seasonal reasons) or opening during the period, the denominator of the above expression includes only operating periods.

16 *Guest arrivals.* The total number of paying guests counted only on the first night they stayed at the accommodation establishment.

17 *Unit lettings.* The total number of times a holiday flat, unit or house was occupied by a new tenant, counted only on the first night it was occupied by the new tenant.

18 *Average length of stay* is expressed in number of days and calculated:

- for hotels, motels and guest houses and for visitor hostels, by dividing *Guest nights* by *Guest arrivals* and
- for holiday flats, units and houses, by dividing *Unit nights occupied* by *Unit lettings*.

19 *Takings from accommodation.* Revenue received from the provision of accommodation. Takings from meals are excluded. Takings from accommodation for each month generally represent the takings received during that month. Where payments are received in advance of, or after, the provision of accommodation to guests, the monthly figure for takings from accommodation may not necessarily bear a direct relationship to the number of guests accommodated during the month. Rental and storage fees paid to caravan parks for the keeping of private vans in parks are included in the takings of the month they are received.

20 *Star grading.* The grading of hotels and motels with facilities based on the classification system used by members of the Australian Automobile Association (AAA). The gradings are allocated according to a points system based on the amenities and facilities available to guests. Details of the grading scheme are contained in the RACV-RAASA members' publication *Accommodation Australia*, or the individual tour guides produced by members of the AAA. For the purpose of classifying establishments to a star

EXPLANATORY NOTES — *continued*

grading in this publication, 'half' star gradings are ignored (e.g. a two and a half star grading has been shown as two star).

21 *Employment.* The number of persons working at accommodation establishments at the end of the survey period (including working proprietors and those working on other than accommodation activities).

AUSTRALIAN STANDARD
GEOGRAPHICAL
CLASSIFICATION

22. Statistics presented in this publication have been classified according to the Australian Standard Geographical Classification (ASGC), Edition 2.3. This classification incorporates a number of hierarchic structures of geographic areas. The appropriate spatial units of the main structure of the ASGC used in this publication are shown in the appendix and are defined as follows.

Statistical Local Areas (SLAs) are legal local government areas or equivalent spatial units which serve as the smallest type of spatial unit considered appropriate for the presentation of statistics. In aggregate, SLAs cover the whole of the State without gaps or overlaps.

Statistical Subdivisions (SSDs). These consist of one or more SLAs and form the intermediate size spatial unit for the presentation of regional data.

Statistical Divisions (SDs). These consist of one or more SSDs. The divisions are designed to be relatively homogeneous regions characterised by identifiable social and economic units within the region, under the unifying influence of one or more major towns or cities. For more detailed information, refer to the ASGC (1216.0).

UNPUBLISHED STATISTICS

23 The ABS may make available on request certain unpublished tourist accommodation statistics. A charge may be made for this information.

RELATED PUBLICATIONS

24 Publications for Australia, and each State and Territory, are released by the respective offices of the ABS. Tourist accommodation statistics for past quarters are available on request.

25 Other ABS publications which may be of interest include:

Directory of Tourism Statistics, 1991 (1130.0) (irregular)

Overseas Arrivals and Departures, Australia (3401.0) (monthly)

Tourism Indicators Australia (8634.0) (quarterly)

Tourist Accommodation, Australia (8635.0) (quarterly)

26 Current publications produced by the ABS are listed in the *Catalogue of Publications and Products* (1101.0). The ABS also issues the *Publications Advice* (1105.0) on Tuesdays and Fridays which lists publications to be released in the next few days. Both the *Catalogue* and *Publications Advice* are available from any ABS office.

SYMBOLS AND
OTHER USAGES

n.a. not available

n.p. not available for publication but included in totals where applicable

r figure or series revised since previous issue

.. not applicable

— nil or rounded to zero

(C) Municipality with city status

(DC) District council

(M) Municipality

(RC) Rural City

27 Where figures have been rounded, discrepancies may occur between totals and the sums of the component items.

P. M. GARDNER
Deputy Commonwealth Statistician
and Government Statist

APPENDIX

STATISTICAL DIVISIONS, STATISTICAL SUB DIVISIONS AND STATISTICAL LOCAL AREAS,
SOUTH AUSTRALIA**ADELAIDE***Northern*

Elizabeth (C)
 Enfield (C) – Pt A
 Gawler (M)
 Munno Para (C)
 Salisbury (C)
 Tea Tree Gully (C)

Western

Enfield (C) – Pt B
 Henley & Grange (C)
 Hindmarsh (M)
 Port Adelaide (C)
 Thebarton (M)
 West Torrens (C)
 Woodville (C)
 Unincorporated Western

Eastern

Adelaide (C)
 Burnside (C)
 Campbelltown (C)
 East Torrens (DC)
 Kensington & Norwood (C)
 Payneham (C)
 Prospect (C)
 St Peters (M)
 Stirling (DC)
 Unley (C)
 Walkerville (M)

Southern

Brighton (C)
 Glenelg (C)
 Happy Valley (C)
 Marion (C)
 Mitcham (C)
 Noarlunga (C)
 Willunga (DC)

OUTER ADELAIDE*Barossa*

Angaston (DC)
 Barossa (DC)
 Gumeracha (DC)
 Kapunda (DC)
 Light (DC)
 Mallala (DC)
 Mount Pleasant (DC)
 Tanunda (DC)

Kangaroo Island

Dudley (DC)
 Kingscote (DC)

Onkaparinga

Mount Barker (DC)
 Onkaparinga (DC)

Fleurieu

Port Elliot & Goolwa (DC)
 Strathalbyn (DC)
 Victor Harbor (DC)
 Yankalilla (DC)

YORKE AND LOWER NORTH*Yorke*

Bute (DC)
 Central Yorke Peninsula (DC)
 Minlaton (DC)
 Northern Yorke Peninsula (DC)
 Port Broughton (DC)
 Wallaroo (M)
 Warooka (DC)
 Yorketown (DC)
 Unincorporated Yorke

Lower North

Blyth-Snowtown (DC)
 Burra Burra (DC)
 Clare (DC)
 Eudunda (DC)
 Riverton (DC)
 Robertstown (DC)
 Saddleworth & Auburn (DC)
 Spalding (DC)
 Wakefield Plains (DC)

MURRAY LANDS*Riverland*

Barnera (DC)
 Berri (DC)
 Browns Well (DC)
 Loxton (DC)
 Morgan (DC)
 Paringa (DC)
 Renmark (M)
 Waikerie (DC)
 Unincorporated Riverland

Murray Mallee

Coonalpyn Downs (DC)
 Karoonda-East Murray (DC)
 Lameroo (DC)
 Mannum (DC)
 Meningie (DC)
 Murray Bridge (RC)
 Peake (DC)
 Pinnaroo (DC)
 Ridley-Truro (DC)
 Unincorporated Murray Mallee

SOUTH EAST*Upper South East*

Lacepede (DC)
 Lucindale (DC)
 Naracoorte (M)
 Naracoorte (DC)
 Robe (DC)
 Tatiara (DC)

Lower South East

Beachport (DC)
 Millicent (DC)
 Mount Gambier (C)
 Mount Gambier (DC)
 Penola (DC)
 Port MacDonnell (DC)

EYRE*Lincoln*

Cleve (DC)
 Elliston (DC)
 Franklin Harbor (DC)
 Kimba (DC)
 Le Hunte (DC)
 Lower Eyre Peninsula (DC)
 Port Lincoln (C)
 Tumby Bay (DC)
 Unincorporated Lincoln

West Coast

Murat Bay (DC)
 Streaky Bay (DC)
 Unincorporated West Coast

NORTHERN*Whyalla*

Whyalla (C)
 Unincorporated Whyalla

Pirie

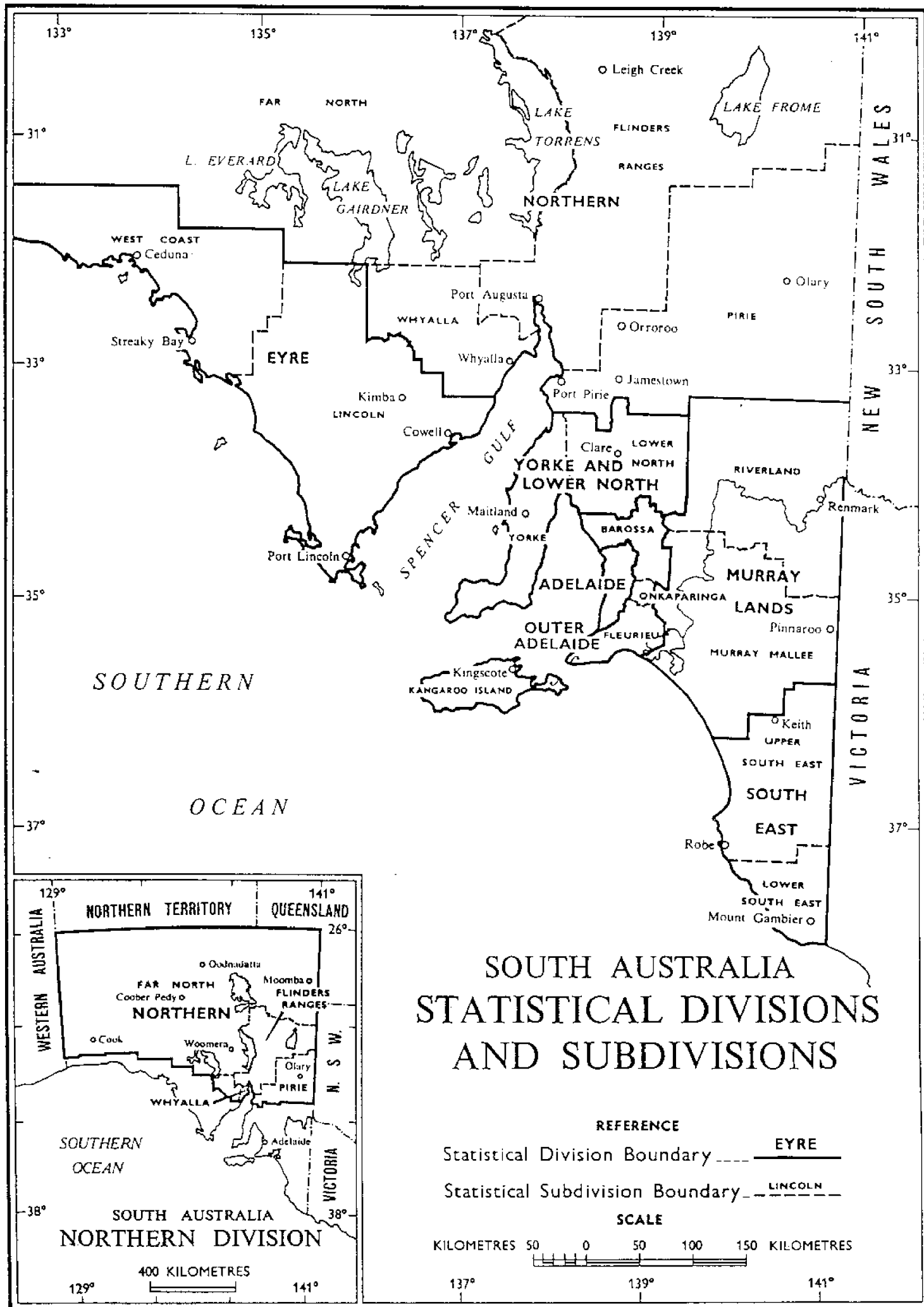
Crystal Brook-Redhill (DC)
 Hallett (DC)
 Jamestown (DC)
 Orreroo (DC)
 Peterborough (M)
 Peterborough (DC)
 Pirie (DC)
 Port Pirie (C)
 Rocky River (DC)
 Unincorporated Pirie

Flinders Ranges

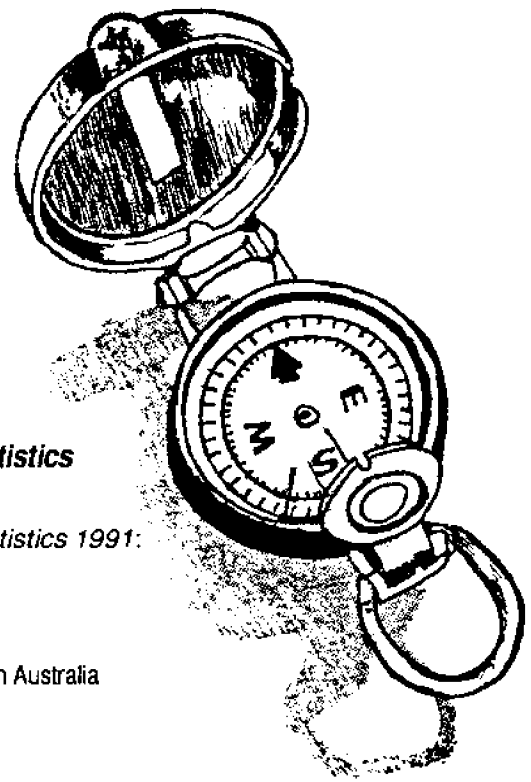
Carrieton (DC)
 Hawker (DC)
 Kanyaka-Quorn (DC)
 Mount Remarkable (DC)
 Port Augusta (C)
 Unincorporated Flinders Ranges

Far North

Cooper Pedy (DC)
 Roxby Downs (M)
 Unincorporated Far North



DIRECTORY OF TOURISM STATISTICS 1991



Suitable for the Experienced Researcher or Occasional User of Tourism Statistics

An essential tool for tourism business decisions, the *Directory of Tourism Statistics 1991*:

- ◆ offers **quick reference** sources of tourism data
- ◆ provides a **comprehensive** listing of public sector statistical data sources available within Australia
- ◆ **provides** appropriate contact details
- ◆ **presents** data to illustrate the uses of the surveys presented
- ◆ **outlines** industry standard definitions and measures of tourism activity, for survey designers.

For Your Copy Mail Or Fax Us Today Or Telephone Direct On (08) 237 7582

ORDER FORM

Return your completed order form to:

**ABS Bookshop
GPO Box 2272
ADELAIDE SA 5001
(08) 237 7566**

or fax a photocopy of this order form to:

I wish to purchase copies of the *Directory of Tourism Statistics, 1991* (Catalogue No. 1130.0) at \$49.50 per copy.

Please find enclosed my cheque or money order for \$.....

(Cheques/money orders should be made payable to *The Collector of Public Moneys*)

OR

Please debit my Bankcard Mastercard Visa for \$.....

Card No. _____ Expiry date ____ / ____ / ____

Name on card _____

Signature _____

POST TO:

Name _____

Organisation _____

Type of business _____

Address _____

Postcode _____ Phone _____



For more information ...

The ABS publishes a wide range of information on Australia's economic and social conditions. A catalogue of publications and products is available from any of our Offices (see below for contact details).

Information Consultancy Service

Special tables or in-depth data investigations are provided by the ABS Information Consultancy Service in each of our Offices (see below for contact details).

Electronic Data Services

A large range of data is available via on-line services, diskette, magnetic tape, tape cartridge and CD ROM. For more details about our electronic data services, contact any ABS Office (see below).

Bookshops and Subscriptions

There are over 400 titles available from the ABS Bookshops in each of our Offices. You can also receive any of our publications on a regular basis. Join our subscription mailing service and have your publications mailed to you in Australia at no additional cost. Telephone our Publications Subscription Service toll free on 008 02 06 08 Australia wide.

Sales and Inquiries

55 Currie Street, Adelaide



SYDNEY (02) 268 4611
MELBOURNE (03) 615 7000
BRISBANE (07) 222 6351
PERTH (09) 360 5140

ADELAIDE (08) 237 7100
HOBART (002) 20 5800
DARWIN (089) 43 2111
CANBERRA (06) 207 0326

NATIONAL OFFICE (CANBERRA) (06) 252 6007



Information Services, ABS, GPO Box 2272, ADELAIDE SA 5001
or any ABS Office.

